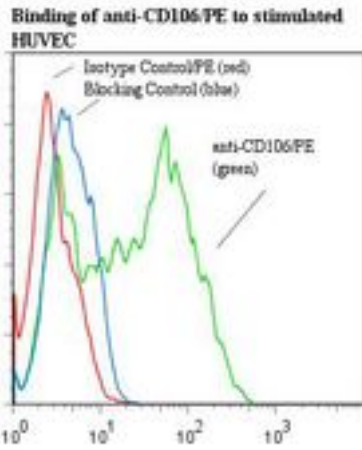


VCAM1 / VCAM-1 / CD106 Mouse anti-Human Monoclonal (RPE) (1.G11B1) Antibody - LS-C134707 - LSBio	
CatalogID:	LS-C134707
Target:	vascular cell adhesion molecule 1 (VCAM1)
Synonyms:	VCAM1 Antibody, CD106 Antibody, CD106 antigen Antibody, INCAM-100 Antibody, V-CAM 1 Antibody, VCAM-1 Antibody
Family / Subfamily:	ICAM / not assigned-ICAM
Host	VCAM1 antibody was produced in Mouse
Clonality:	Monoclonal
Isotype:	IgG1
Clone Name:	1.G11B1
Conjugations:	R. Phycoerythrin (RPE)
Immunogen Species:	VCAM1 / VCAM-1 / CD106 antibody was raised against Human
Immunogen:	VCAM1 / VCAM-1 / CD106 antibody was raised against human endothelial cells.
Specificity:	VCAM-1 molecule (CD106) which is involved with leukocyte adhesion.
Reactivity:	Human
Purification:	Gel filtration
Presentation:	50 mM sodium phosphate, pH 7.5, 500 mM potassium chloride, 150 mM sodium chloride, 15% Glycerol, 0.2% BSA, 0.04% sodium azide
Recommended Storage:	Store at +4°C. Do not freeze. Product is photosensitive and should be protected from light.
Usage Summary:	Function: Binds to an epitope located within the first three n-terminal loops of CD106. This mAb blocks lymphocyte and eosinophil adhesion to CD106. It has been reported to work in IHC (frozen section) and Western blot.
Uses:	IHC, Western blot, Flow Cytometry, ELISA, Functional Assay (Optimal dilution to be determined by the researcher)
Size:	120 tst

Flow Cytometry Image:



Flow cytometry of VCAM1 / VCAM-1 / CD106 antibody

Requested From:

Japan

Laboratory Reagent For In Vitro Research Use Only

Not for resale without prior written consent from LifeSpan BioSciences, Inc.

Created on 9/25/2014

© 2014 LifeSpan BioSciences