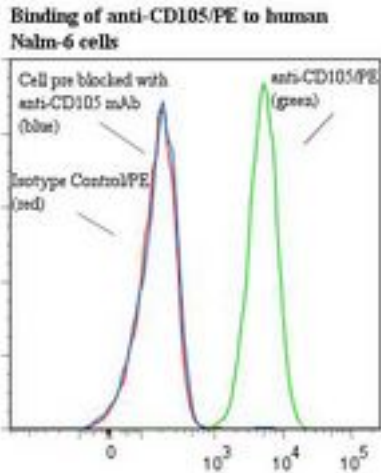


CD105 Mouse anti-Human Monoclonal (RPE) (SN6/N1-3A1) Antibody - LS-C134702 - LSBio

CatalogID:	LS-C134702
Target:	endoglin (ENG)
Synonyms:	ENG Antibody, CD105 Antibody, CD105 antigen Antibody, END Antibody, HHT1 Antibody, ORW Antibody, ORW1 Antibody, Osler-Rendu-Weber syndrome 1 Antibody, Endoglin Antibody
Host	ENG antibody was produced in Mouse
Clonality:	Monoclonal
Isotype:	IgG1,k
Clone Name:	SN6/N1-3A1
Conjugations:	R. Phycoerythrin (RPE)
Immunogen Species:	CD105 antibody was raised against Human
Immunogen:	CD105 antibody was raised against membrane preparation of human B-lineage leukemia cells.
Specificity:	CD105 homodimer with a molecular weight of about 160 kd.
Reactivity:	Human
Purification:	Gel filtration
Presentation:	50 mM sodium phosphate, pH 7.5, 500 mM potassium chloride, 150 mM sodium chloride, 15% Glycerol, 0.2% BSA, 0.04% sodium azide
Recommended Storage:	Store at +4°C. Do not freeze. Product is photosensitive and should be protected from light.
Usage Summary:	Function: Augments binding of TGF-b1 to CD105 expressing leukemia cells.
Uses:	IHC, Flow Cytometry, Functional Assay (Optimal dilution to be determined by the researcher)
Size:	120 tst

Flow Cytometry Image:



Flow cytometry of CD105 antibody

Requested From:

Japan

Laboratory Reagent For In Vitro Research Use Only

Not for resale without prior written consent from LifeSpan BioSciences, Inc.

Created on 9/25/2014

© 2014 LifeSpan BioSciences