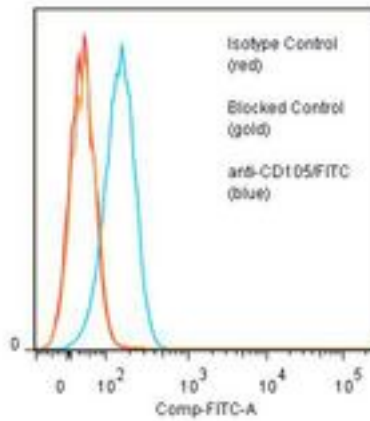


CD105 Mouse anti-Human Monoclonal (FITC) (SN6/N1-3A1) Antibody - LS-C134701 - LSBio	
<b>CatalogID:</b>	LS-C134701
<b>Target:</b>	endoglin (ENG)
<b>Synonyms:</b>	ENG Antibody, CD105 Antibody, CD105 antigen Antibody, END Antibody, HHT1 Antibody, ORW Antibody, ORW1 Antibody, Osler-Rendu-Weber syndrome 1 Antibody, Endoglin Antibody
<b>Host</b>	ENG antibody was produced in Mouse
<b>Clonality:</b>	Monoclonal
<b>Isotype:</b>	IgG1,k
<b>Clone Name:</b>	SN6/N1-3A1
<b>Conjugations:</b>	Fluorescein (FITC)
<b>Immunogen Species:</b>	CD105 antibody was raised against Human
<b>Immunogen:</b>	CD105 antibody was raised against membrane preparation of human B-lineage leukemia cells.
<b>Specificity:</b>	CD105 homodimer with a molecular weight of about 160 kd.
<b>Reactivity:</b>	Human
<b>Purification:</b>	Protein A purified
<b>Presentation:</b>	50 mM sodium phosphate, pH 7.5, 100 mM potassium chloride, 150 mM sodium chloride, 5% Glycerol, 0.2% BSA, 0.04% sodium azide
<b>Recommended Storage:</b>	Store at +4°C. Do not freeze. Product is photosensitive and should be protected from light.
<b>Usage Summary:</b>	Function: Augments binding of TGF-b1 to CD105 expressing leukemia cells.
<b>Uses:</b>	IHC, Flow Cytometry, Functional Assay (Optimal dilution to be determined by the researcher)
<b>Size:</b>	120 tst

**Flow Cytometry Image:**

**Binding of anti-CD105/FITC to human Nalm-6 cells**



Flow cytometry of CD105 antibody

**Requested From:**

Japan

Laboratory Reagent For In Vitro Research Use Only

Not for resale without prior written consent from LifeSpan BioSciences, Inc.

Created on 9/25/2014

© 2014 LifeSpan BioSciences