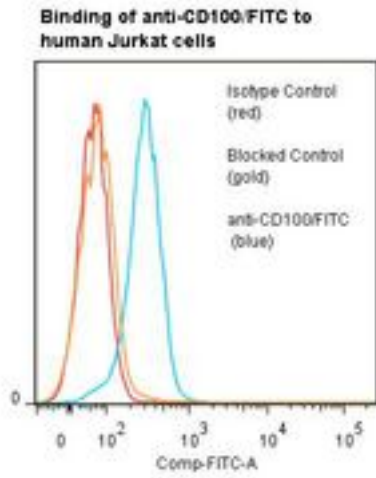


SEMA4D / CD100 Mouse anti-Human Monoclonal (FITC) (133-1C6) Antibody - LS-C134692 - LSBio

CatalogID:	LS-C134692
Target:	sema domain, immunoglobulin domain (Ig), transmembrane domain (TM) and short cytoplasmic domain, (semaphorin) 4D (SEMA4D)
Synonyms:	SEMA4D Antibody, A8 Antibody, BB18 Antibody, C9orf164 Antibody, CD100 antigen Antibody, Coll-4 Antibody, GR3 Antibody, Semaphorin-4D Antibody, M-sema-G Antibody, SEMAJ Antibody, CD100 Antibody
Host	SEMA4D antibody was produced in Mouse
Clonality:	Monoclonal
Isotype:	IgM
Clone Name:	133-1C6
Conjugations:	Fluorescein (FITC)
Immunogen Species:	SEMA4D / CD100 antibody was raised against Human
Immunogen:	SEMA4D / CD100 antibody was raised against PHA stimulated human PBL.
Specificity:	CD100 molecule of about 150 kd.
Reactivity:	Human
Purification:	Gel filtration
Presentation:	50 mM sodium phosphate, pH 7.5, 100 mM potassium chloride, 150 mM sodium chloride, 5% Glycerol, 0.2% BSA, 0.04% sodium azide
Recommended Storage:	Store at +4°C. Do not freeze. Product is photosensitive and should be protected from light.
Uses:	Flow Cytometry (Optimal dilution to be determined by the researcher)
Size:	120 tst

Flow Cytometry Image:



Flow cytometry of SEMA4D / CD100 antibody

Requested From:

Japan

Laboratory Reagent For In Vitro Research Use Only

Not for resale without prior written consent from LifeSpan BioSciences, Inc.

Created on 9/25/2014

© 2014 LifeSpan BioSciences