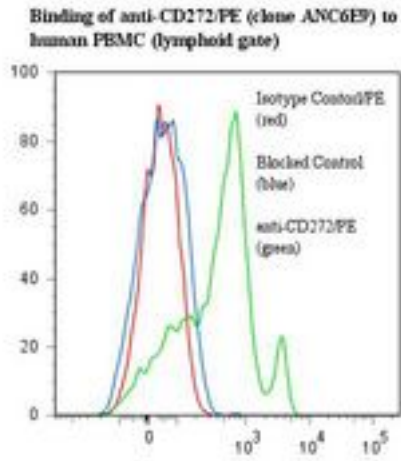


BTLA / CD272 Mouse anti-Human Monoclonal (RPE) (ANC6E9) Antibody - LS-C134634 - LSBio	
CatalogID:	LS-C134634
Target:	B and T lymphocyte associated (BTLA)
Synonyms:	BTLA Antibody, BTLA1 Antibody, B and T lymphocyte associated Antibody, CD272 Antibody, B and T lymphocyte attenuator Antibody, B- and T-lymphocyte attenuator Antibody, CD272 antigen Antibody
Host	BTLA antibody was produced in Mouse
Clonality:	Monoclonal
Isotype:	IgG1,k
Clone Name:	ANC6E9
Conjugations:	R. Phycoerythrin (RPE)
Immunogen Species:	BTLA / CD272 antibody was raised against Human
Immunogen:	BTLA / CD272 antibody was raised against recombinant extracellular human CD272.
Specificity:	CD272 on the cell surface of human PBMC in Flow cytometry, and to recombinant CD272-mulg in EIA.
Reactivity:	Human
Purification:	Gel filtration
Presentation:	50 mM sodium phosphate, pH 7.5, 500 mM potassium chloride, 150 mM sodium chloride, 15% Glycerol, 0.2% BSA, 0.04% sodium azide
Recommended Storage:	Store at +4°C. Do not freeze. Product is photosensitive and should be protected from light.
Usage Summary:	ELISA: Capture.
Uses:	Flow Cytometry, ELISA (Optimal dilution to be determined by the researcher)
Size:	120 tst

Flow Cytometry Image:



Flow cytometry of BTLA / CD272 antibody

Requested From:

Japan

Laboratory Reagent For In Vitro Research Use Only

Not for resale without prior written consent from LifeSpan BioSciences, Inc.

Created on 9/25/2014

© 2014 LifeSpan BioSciences