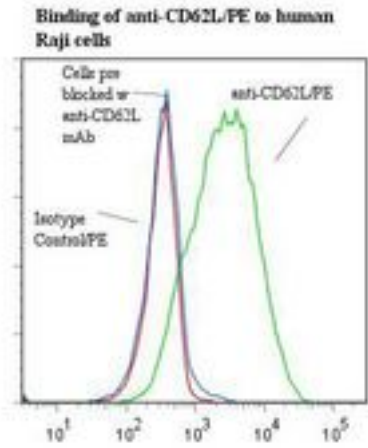


SELL / L-Selectin / CD62L Mouse anti-Human Monoclonal (RPE) (LAM1-116) Antibody - LS-C134601 - LSBio	
<b>CatalogID:</b>	LS-C134601
<b>Target:</b>	selectin L (SELL)
<b>Synonyms:</b>	SELL Antibody, CD62L Antibody, CD62L antigen Antibody, LAM-1 Antibody, LAM1 Antibody, LECAM1 Antibody, LEU8 Antibody, Leukocyte adhesion molecule 1 Antibody, Lyam-1 Antibody, LSEL Antibody, gp90-MEL Antibody, HLHRc Antibody, PLNHR Antibody, L-selectin Antibody, Leu-8 Antibody, Selectin L Antibody, LNHR Antibody, LYAM1 Antibody, Lymph node homing receptor Antibody, Lymphocyte adhesion molecule 1 Antibody, TQ1 Antibody, PIn homing receptor Antibody
<b>Host</b>	SELL antibody was produced in Mouse
<b>Clonality:</b>	Monoclonal
<b>Isotype:</b>	IgG2a,k
<b>Clone Name:</b>	LAM1-116
<b>Conjugations:</b>	R. Phycoerythrin (RPE)
<b>Immunogen Species:</b>	SELL / L-Selectin / CD62L antibody was raised against Human
<b>Antigen Type:</b>	Cells
<b>Immunogen:</b>	SELL / L-Selectin / CD62L antibody was raised against mouse pre-B cells expressing human L-selectin.
<b>Specificity:</b>	Lectin binding domain of human, mouse, rat and guinea pig CD62L.
<b>Reactivity:</b>	Human
<b>Purification:</b>	Gel filtration
<b>Presentation:</b>	50 mM sodium phosphate, pH 7.5, 500 mM potassium chloride, 150 mM sodium chloride, 15% Glycerol, 0.2% BSA, 0.04% sodium azide
<b>Recommended Storage:</b>	Store at +4°C. Do not freeze. Product is photosensitive and should be protected from light.
<b>Usage Summary:</b>	Function: Blocks CD62L function and induces expression of beta-1 and beta-2 integrins.
<b>Uses:</b>	Flow Cytometry, Functional Assay (Optimal dilution to be determined by the researcher)
<b>Size:</b>	120 tst

**Flow Cytometry Image:**



Flow cytometry of SELL / L-Selectin / CD62L antibody

**Requested From:**

Japan

Laboratory Reagent For In Vitro Research Use Only

Not for resale without prior written consent from LifeSpan BioSciences, Inc.

Created on 9/25/2014

© 2014 LifeSpan BioSciences