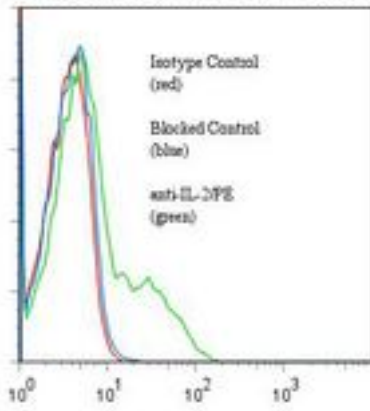


TLR1 Mouse anti-Human Monoclonal (RPE) (ANC7F7) Antibody - LS-C134580 - LSBio

CatalogID:	LS-C134580
Target:	toll-like receptor 1 (TLR1)
Synonyms:	TLR1 Antibody, CD281 antigen Antibody, KIAA0012 Antibody, Rsc786 Antibody, Toll-like receptor 1 Antibody, TIL. LPRS5 Antibody, TIL Antibody, CD281 Antibody
Family / Subfamily:	Toll-like Receptor / not assigned-Toll-like Receptor
Host	TLR1 antibody was produced in Mouse
Clonality:	Monoclonal
Isotype:	IgG1
Clone Name:	ANC7F7
Conjugations:	R. Phycoerythrin (RPE)
Immunogen Species:	TLR1 antibody was raised against Human
Antigen Type:	Recombinant protein
Immunogen:	TLR1 antibody was raised against recombinant human IL-2.
Specificity:	Human IL-2.
Reactivity:	Human
Purification:	Gel filtration
Presentation:	50 mM sodium phosphate, pH 7.5, 500 mM potassium chloride, 150 mM sodium chloride, 15% Glycerol, 0.2% BSA, 0.04% sodium azide
Recommended Storage:	Store at +4°C. Do not freeze. Product is photosensitive and should be protected from light.
Usage Summary:	Flow Cytometry: Intracellular staining.
Uses:	Flow Cytometry (Optimal dilution to be determined by the researcher)
Size:	120 tst

Flow Cytometry Image:

Binding of anti-IL-2/PE to fixed permeabilized, stimulated human PBMC



Flow cytometry of TLR1 antibody

Requested From:

Japan

Laboratory Reagent For In Vitro Research Use Only

Not for resale without prior written consent from LifeSpan BioSciences, Inc.

Created on 9/25/2014

© 2014 LifeSpan BioSciences