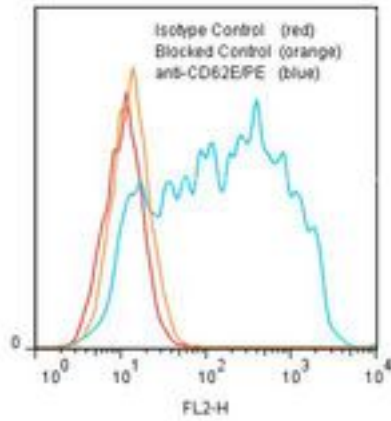


SELE / CD62E / E-selectin Mouse anti-Human Monoclonal (RPE) (HAE-1f) Antibody - LS-C134575 - LSBio	
<b>CatalogID:</b>	LS-C134575
<b>Target:</b>	selectin E
<b>Synonyms:</b>	SELE Antibody, CD62E Antibody, ELAM Antibody, ESEL Antibody, E-selectin Antibody, LECAM2 Antibody, CD62E antigen Antibody, ELAM-1 Antibody, ELAM1 Antibody, Selectin E Antibody
<b>Host</b>	SELE antibody was produced in Mouse
<b>Clonality:</b>	Monoclonal
<b>Isotype:</b>	IgG1
<b>Clone Name:</b>	HAE-1f
<b>Conjugations:</b>	R. Phycoerythrin (RPE)
<b>Immunogen Species:</b>	SELE / CD62E / E-selectin antibody was raised against Human
<b>Immunogen:</b>	SELE / CD62E / E-selectin antibody was raised against tNF activated HUVEC.
<b>Specificity:</b>	Lectin domain of CD62E.
<b>Reactivity:</b>	Human
<b>Purification:</b>	Gel filtration
<b>Presentation:</b>	50 mM sodium phosphate, pH 7.5, 500 mM potassium chloride, 150 mM sodium chloride, 15% Glycerol, 0.2% BSA, 0.04% sodium azide
<b>Recommended Storage:</b>	Store at +4°C. Do not freeze. Product is photosensitive and should be protected from light.
<b>Usage Summary:</b>	Function: Blocks the function of CD62E.
<b>Uses:</b>	Flow Cytometry, Functional Assay (Optimal dilution to be determined by the researcher)
<b>Size:</b>	120 tst

## Flow Cytometry Image:

Binding of anti-CD62E/PE to stimulated HUVEC cells



Flow cytometry of SELE / CD62E / E-selectin antibody

**Requested From:**

Japan

Laboratory Reagent For In Vitro Research Use Only

Not for resale without prior written consent from LifeSpan BioSciences, Inc.

Created on 9/25/2014

© 2014 LifeSpan BioSciences