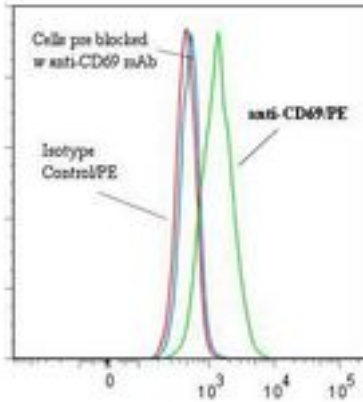


CD69 Mouse anti-Human Monoclonal (RPE) (HP-4B3) Antibody - LS-C134542 - LSBio

CatalogID:	LS-C134542
Target:	CD69 molecule
Synonyms:	CD69 Antibody, Activation inducer molecule Antibody, AIM Antibody, CD69 antigen Antibody, CLEC2C Antibody, EA1 Antibody, Early activation antigen CD69 Antibody, BL-AC/P26 Antibody, CD69 molecule Antibody, gp32/28 Antibody, MLR-3 Antibody
Host	CD69 antibody was produced in Mouse
Clonality:	Monoclonal
Isotype:	IgG2a
Clone Name:	HP-4B3
Conjugations:	R. Phycoerythrin (RPE)
Immunogen Species:	CD69 antibody was raised against Human
Antigen Type:	Cells
Immunogen:	CD69 antibody was raised against iL-2 activated human NK cells.
Specificity:	Dimeric CD69 molecule of 60 kd.
Reactivity:	Human
Purification:	Gel filtration
Presentation:	50 mM sodium phosphate, pH 7.5, 500 mM potassium chloride, 150 mM sodium chloride, 15% Glycerol, 0.2% BSA, 0.04% sodium azide
Recommended Storage:	Store at +4°C. Do not freeze. Product is photosensitive and should be protected from light.
Uses:	Flow Cytometry (Optimal dilution to be determined by the researcher)
Size:	120 tst

Flow Cytometry Image:

Binding of anti-CD69/R-PE to human
HEL92.1 cells



Flow cytometry of CD69 antibody

Requested From:

Japan

Laboratory Reagent For In Vitro Research Use Only

Not for resale without prior written consent from LifeSpan BioSciences, Inc.

Created on 9/25/2014

© 2014 LifeSpan BioSciences