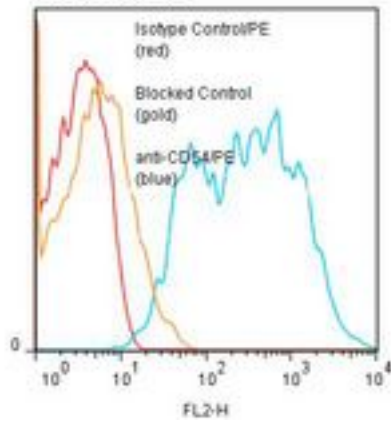


ICAM1 / CD54 Mouse anti-Human Monoclonal (RPE) (15.2) Antibody - LS-C134491 - LSBio	
<b>CatalogID:</b>	LS-C134491
<b>Target:</b>	intercellular adhesion molecule 1 (ICAM1)
<b>Synonyms:</b>	ICAM1 Antibody, BB2 Antibody, CD54 antigen Antibody, CD54 Antibody, ICAM-1 Antibody, p3.58 Antibody
<b>Family / Subfamily:</b>	ICAM / not assigned-ICAM
<b>Host</b>	ICAM1 antibody was produced in Mouse
<b>Clonality:</b>	Monoclonal
<b>Isotype:</b>	IgG1,k
<b>Clone Name:</b>	15.2
<b>Conjugations:</b>	R. Phycoerythrin (RPE)
<b>Immunogen Species:</b>	ICAM1 / CD54 antibody was raised against Human
<b>Antigen Type:</b>	Cells
<b>Immunogen:</b>	ICAM1 / CD54 antibody was raised against human monocytes.
<b>Specificity:</b>	D1 domain of the CD54 molecule of 90 kd.
<b>Reactivity:</b>	Human
<b>Purification:</b>	Gel filtration
<b>Presentation:</b>	50 mM sodium phosphate, pH 7.5, 500 mM potassium chloride, 150 mM sodium chloride, 15% Glycerol, 0.2% BSA, 0.04% sodium azide
<b>Recommended Storage:</b>	Store at +4°C. Do not freeze. Product is photosensitive and should be protected from light.
<b>Usage Summary:</b>	ELISA: Capture
<b>Uses:</b>	IHC, Western blot, Flow Cytometry, ELISA (Optimal dilution to be determined by the researcher)
<b>Size:</b>	120 tst

**Flow Cytometry Image:**

**Binding of anti-CD54(D1)PE to human Raji cells**



Flow cytometry of ICAM1 / CD54 antibody

**Requested From:**

Japan

Laboratory Reagent For In Vitro Research Use Only

Not for resale without prior written consent from LifeSpan BioSciences, Inc.

Created on 9/25/2014

© 2014 LifeSpan BioSciences