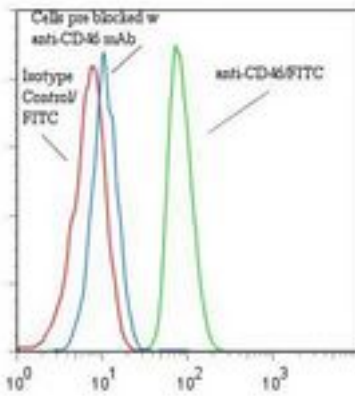


MCP / CD46 Mouse anti-Human Monoclonal (FITC) (169-1-EA.3) Antibody - LS-C134460 - LSBio	
<b>CatalogID:</b>	LS-C134460
<b>Target:</b>	CD46 molecule, complement regulatory protein
<b>Synonyms:</b>	CD46 Antibody, AHUS2 Antibody, CD46 antigen Antibody, MCP Antibody, Measles virus receptor Antibody, TLX Antibody, MIC10 Antibody, TRA2.10 Antibody, Membrane cofactor protein Antibody
<b>Host</b>	CD46 antibody was produced in Mouse
<b>Clonality:</b>	Monoclonal
<b>Isotype:</b>	IgG2a
<b>Clone Name:</b>	169-1-EA.3
<b>Conjugations:</b>	Fluorescein (FITC)
<b>Immunogen Species:</b>	MCP / CD46 antibody was raised against Human
<b>Immunogen:</b>	MCP / CD46 antibody was raised against human PBL and EBV transformed LCL.
<b>Specificity:</b>	SCR1 epitope of CD46.
<b>Reactivity:</b>	Human
<b>Purification:</b>	Protein A purified
<b>Presentation:</b>	50 mM sodium phosphate, pH 7.5, 100 mM potassium chloride, 150 mM sodium chloride, 5% Glycerol, 0.2% BSA, 0.04% sodium azide
<b>Recommended Storage:</b>	Store at +4°C. Do not freeze. Product is photosensitive and should be protected from light.
<b>Usage Summary:</b>	Function: Does not block MCP function.
<b>Uses:</b>	Western blot, Flow Cytometry, Functional Assay (Optimal dilution to be determined by the researcher)
<b>Size:</b>	120 tst

**Flow Cytometry Image:**

Binding of anti-CD46/FITC to human HFB-MLT tumor cells



Flow cytometry of MCP / CD46 antibody

**Requested From:**

Japan

Laboratory Reagent For In Vitro Research Use Only

Not for resale without prior written consent from LifeSpan BioSciences, Inc.

Created on 9/25/2014

© 2014 LifeSpan BioSciences