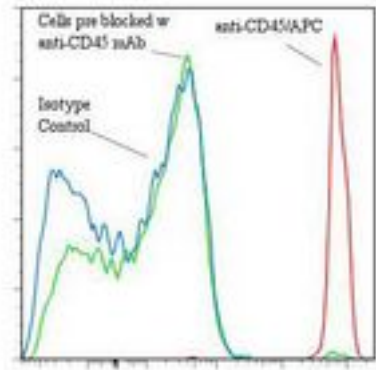


**CD45 Mouse anti-Human Monoclonal (APC) (C11) Antibody - LS-C134457 - LSBio**

<b>CatalogID:</b>	LS-C134457
<b>Target:</b>	protein tyrosine phosphatase, receptor type, C (PTPRC)
<b>Synonyms:</b>	PTPRC Antibody, B220 Antibody, CD45R Antibody, CD45 Antibody, gp180 Antibody, Leukocyte common antigen Antibody, L-CA Antibody, Leucocyte common antigen Antibody, LY5 Antibody, T200 Antibody, T200 glycoprotein Antibody, T200 leukocyte common antigen Antibody, CD45 antigen Antibody, LCA Antibody
<b>Family / Subfamily:</b>	Protein Phosphatase / R1/R6
<b>Host</b>	PTPRC antibody was produced in Mouse
<b>Clonality:</b>	Monoclonal
<b>Isotype:</b>	IgG2a,k
<b>Clone Name:</b>	C11
<b>Conjugations:</b>	Allophycocyanin (APC)
<b>Immunogen Species:</b>	CD45 antibody was raised against Human
<b>Antigen Type:</b>	Cells
<b>Immunogen:</b>	CD45 antibody was raised against peripheral blood mononuclear cells.
<b>Specificity:</b>	All isoforms of CD45.
<b>Reactivity:</b>	Human
<b>Purification:</b>	Gel filtration
<b>Presentation:</b>	50 mM sodium phosphate, pH 7.5, 500 mM potassium chloride, 150 mM sodium chloride, 15% Glycerol, 0.2% BSA, 0.04% sodium azide
<b>Recommended Storage:</b>	Store at +4°C. Do not freeze. Product is photosensitive and should be protected from light.
<b>Uses:</b>	Flow Cytometry (Optimal dilution to be determined by the researcher)
<b>Size:</b>	120 tst

**Flow Cytometry Image:**

**Binding of anti-CD45/APC to fresh ficolled human PBL**



Flow cytometry of CD45 antibody

**Requested From:**

Japan

Laboratory Reagent For In Vitro Research Use Only

Not for resale without prior written consent from LifeSpan BioSciences, Inc.

Created on 9/25/2014

© 2014 LifeSpan BioSciences