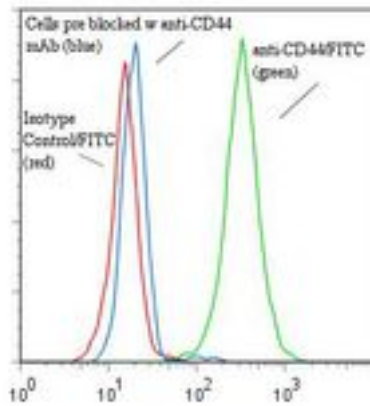


**CD44 Mouse anti-Human Monoclonal (FITC) (BU52) Antibody - LS-C134441 - LSBio**

<b>CatalogID:</b>	LS-C134441
<b>Target:</b>	CD44 molecule (Indian blood group)
<b>Synonyms:</b>	CD44 Antibody, CDW44 Antibody, CD44 antigen Antibody, Cell surface glycoprotein CD44 Antibody, CSPG8 Antibody, ECMR-III Antibody, Epican Antibody, HUTCH-I Antibody, LHR Antibody, MDU2 Antibody, MC56 Antibody, MIC4 Antibody, Hermes antigen Antibody, Hyaluronate receptor Antibody, Phagocytic glycoprotein 1 Antibody, PGP-1 Antibody, PGP-I Antibody, Pgp1 Antibody, Phagocytic glycoprotein I Antibody, MDU3 Antibody, CD44R Antibody, HCELL Antibody, Heparan sulfate proteoglycan Antibody
<b>Host</b>	CD44 antibody was produced in Mouse
<b>Clonality:</b>	Monoclonal
<b>Isotype:</b>	IgG1
<b>Clone Name:</b>	BU52
<b>Conjugations:</b>	Fluorescein (FITC)
<b>Immunogen Species:</b>	CD44 antibody was raised against Human
<b>Antigen Type:</b>	Cells
<b>Immunogen:</b>	CD44 antibody was raised against human peripheral myeloma cells.
<b>Specificity:</b>	Epitope 1 of the CD44 molecule.
<b>Reactivity:</b>	Human
<b>Purification:</b>	Protein A purified
<b>Presentation:</b>	50 mM sodium phosphate, pH 7.5, 100 mM potassium chloride, 150 mM sodium chloride, 5% Glycerol, 0.2% BSA, 0.04% sodium azide
<b>Recommended Storage:</b>	Store at +4°C. Do not freeze. Product is photosensitive and should be protected from light.
<b>Uses:</b>	IHC, Flow Cytometry (Optimal dilution to be determined by the researcher)
<b>Size:</b>	120 tst

**Flow Cytometry Image:**

**Binding of anti-CD44/FITC to human Molt-4 cells**



Flow cytometry of CD44 antibody

**Requested From:**

Japan

Laboratory Reagent For In Vitro Research Use Only

Not for resale without prior written consent from LifeSpan BioSciences, Inc.

Created on 9/25/2014

© 2014 LifeSpan BioSciences