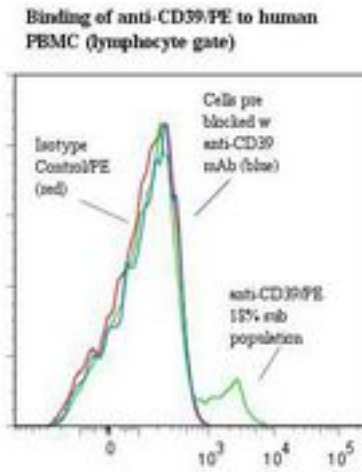


CD39 Mouse anti-Human Monoclonal (RPE) (BU61) Antibody - LS-C134422 - LSBio

CatalogID:	LS-C134422
Target:	ectonucleoside triphosphate diphosphohydrolase 1 (ENTPD1)
Synonyms:	ENTPD1 Antibody, ATPDase Antibody, CD39 Antibody, CD39 antigen Antibody, Ecto-apyrase Antibody, Ecto-ATPDase 1 Antibody, Ecto-ATP diphosphohydrolase 1 Antibody, Ecto-ATPase 1 Antibody, NTPDase-1 Antibody, NTPDase 1 Antibody
Host	ENTPD1 antibody was produced in Mouse
Clonality:	Monoclonal
Isotype:	IgG1
Clone Name:	BU61
Conjugations:	R. Phycoerythrin (RPE)
Immunogen Species:	CD39 antibody was raised against Human
Antigen Type:	Cells
Immunogen:	CD39 antibody was raised against human WM-1 (Waldenstrom's macroglobulinemia) cell line.
Specificity:	CD39 molecule of approximately 80 kd.
Reactivity:	Human
Purification:	Gel filtration
Presentation:	50 mM sodium phosphate, pH 7.5, 500 mM potassium chloride, 150 mM sodium chloride, 15% Glycerol, 0.2% BSA, 0.04% sodium azide
Recommended Storage:	Store at +4°C. Do not freeze. Product is photosensitive and should be protected from light.
Uses:	Western blot, Immunoprecipitation, Flow Cytometry (Optimal dilution to be determined by the researcher)
Size:	120 tst

Flow Cytometry Image:



Flow cytometry of CD39 antibody

Requested From:

Japan

Laboratory Reagent For In Vitro Research Use Only

Not for resale without prior written consent from LifeSpan BioSciences, Inc.

Created on 9/25/2014

© 2014 LifeSpan BioSciences