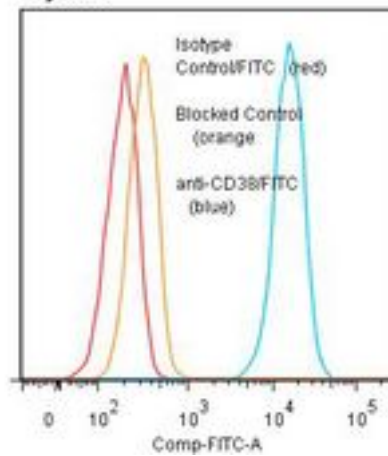


CD38 Mouse anti-Human Monoclonal (FITC) (AT1) Antibody - LS-C134416 - LSBio

CatalogID:	LS-C134416
Target:	CD38 molecule
Synonyms:	CD38 Antibody, ADP-ribosyl cyclase 1 Antibody, CD38 antigen (p45) Antibody, CD38 antigen Antibody, Cyclic ADP-ribose hydrolase 1 Antibody, T10 Antibody, CADPr hydrolase 1 Antibody, CD38 molecule Antibody, NAD(+) nucleosidase Antibody
Host	CD38 antibody was produced in Mouse
Clonality:	Monoclonal
Isotype:	IgG1
Clone Name:	AT1
Conjugations:	Fluorescein (FITC)
Immunogen Species:	CD38 antibody was raised against Human
Immunogen:	CD38 antibody was raised against human T cell tumor cells: CEM.
Specificity:	CD38 molecule of 45 kd.
Reactivity:	Human
Purification:	Protein A purified
Presentation:	50 mM sodium phosphate, pH 7.5, 100 mM potassium chloride, 150 mM sodium chloride, 5% Glycerol, 0.2% BSA, 0.04% sodium azide
Recommended Storage:	Store at +4°C. Do not freeze. Product is photosensitive and should be protected from light.
Usage Summary:	Use 1.6?ul of concentrated stock per 5 x 10e5 cells per test
Uses:	Flow Cytometry (Optimal dilution to be determined by the researcher)
Size:	120 tst

Flow Cytometry Image:

Binding of anti-CD38/FITC to human Raji cells



Flow cytometry of CD38 antibody

Requested From:

Japan

Laboratory Reagent For In Vitro Research Use Only

Not for resale without prior written consent from LifeSpan BioSciences, Inc.

Created on 9/25/2014

© 2014 LifeSpan BioSciences