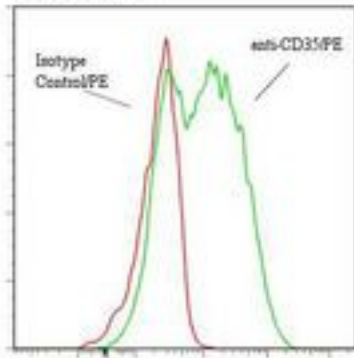


CR1 / CD35 Mouse anti-Human Monoclonal (RPE) (E11) Antibody - LS-C134403 - LSBio	
CatalogID:	LS-C134403
Target:	complement component (3b/4b) receptor 1 (Knops blood group) (CR1)
Synonyms:	CR1 Antibody, C3b/C4b receptor Antibody, C3-binding protein Antibody, CD35 Antibody, C3BR Antibody, Knops blood group antigen Antibody, C4BR Antibody, CD35 antigen Antibody, Complement receptor type 1 Antibody, KN Antibody
Family / Subfamily:	Protease / Serine S1
Host	CR1 antibody was produced in Mouse
Clonality:	Monoclonal
Isotype:	IgG1
Clone Name:	E11
Conjugations:	R. Phycoerythrin (RPE)
Immunogen Species:	CR1 / CD35 antibody was raised against Human
Antigen Type:	Cells
Immunogen:	CR1 / CD35 antibody was raised against human monocytes.
Specificity:	Complement receptor 1 (CD35) molecule of about 220 kd.
Reactivity:	Human
Purification:	Gel filtration
Presentation:	50 mM sodium phosphate, pH 7.5, 500 mM potassium chloride, 150 mM sodium chloride, 15% Glycerol, 0.2% BSA, 0.04% sodium azide
Recommended Storage:	Store at +4°C. Do not freeze. Product is photosensitive and should be protected from light.
Uses:	Western blot, Flow Cytometry (Optimal dilution to be determined by the researcher)
Size:	120 tst

Flow Cytometry Image:

Binding of anti-CD35/PE to human HPB-MLT cells



Flow cytometry of CR1 / CD35 antibody

Requested From:

Japan

Laboratory Reagent For In Vitro Research Use Only

Not for resale without prior written consent from LifeSpan BioSciences, Inc.

Created on 9/25/2014

© 2014 LifeSpan BioSciences