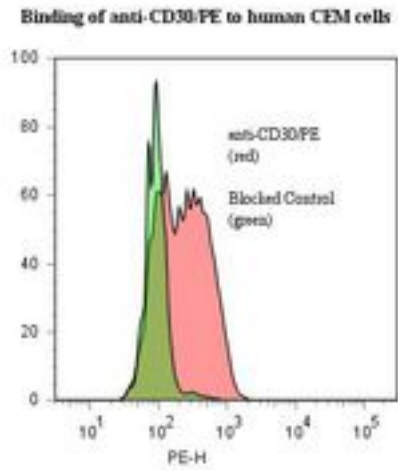


CD30 Mouse anti-Human Monoclonal (RPE) (AC10) Antibody - LS-C134375 - LSBio

CatalogID:	LS-C134375
Target:	tumor necrosis factor receptor superfamily, member 8 (TNFRSF8)
Synonyms:	TNFRSF8 Antibody, CD30L receptor Antibody, CD30 Antibody, Cytokine receptor CD30 Antibody, D1S166E Antibody, Ki-1 Antibody, Ki-1 antigen Antibody, CD30 antigen Antibody
Family / Subfamily:	TNF Receptor / not assigned-TNF Receptor
Host	TNFRSF8 antibody was produced in Mouse
Clonality:	Monoclonal
Isotype:	IgG2b,k
Clone Name:	AC10
Conjugations:	R. Phycoerythrin (RPE)
Immunogen Species:	CD30 antibody was raised against Human
Immunogen:	CD30 antibody was raised against human YT lymphoma cells.
Specificity:	CD30 molecule of about 120 kd and blocks the CD30 / CD153 interaction.
Reactivity:	Human
Purification:	Gel filtration
Presentation:	50 mM sodium phosphate, pH 7.5, 500 mM potassium chloride, 150 mM sodium chloride, 15% Glycerol, 0.2% BSA, 0.04% sodium azide
Recommended Storage:	Store at +4°C. Do not freeze. Product is photosensitive and should be protected from light.
Uses:	Flow Cytometry (Optimal dilution to be determined by the researcher)
Size:	120 tst

Flow Cytometry Image:



Requested From:

Japan

Laboratory Reagent For In Vitro Research Use Only

Not for resale without prior written consent from LifeSpan BioSciences, Inc.

Created on 9/25/2014

© 2014 LifeSpan BioSciences