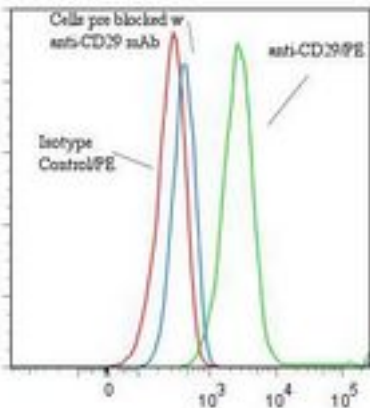


ITGB1 / Integrin Beta 1 / CD29 Mouse anti-Human Monoclonal (RPE) (4B7R) Antibody - LS-C134371 - LSBio	
<b>CatalogID:</b>	LS-C134371
<b>Target:</b>	integrin, beta 1 (fibronectin receptor, beta polypeptide, antigen CD29 includes MDF2, MSK12) (ITGB1)
<b>Synonyms:</b>	ITGB1 Antibody, CD29 Antibody, CD29 antigen Antibody, Integrin beta-1 Antibody, MDF2 Antibody, MSK12 Antibody, Integrin VLA-4 beta subunit Antibody, VLA-BETA Antibody, VLAB Antibody, Beta 1 integrin Antibody, FNRB Antibody, GPIIA Antibody, Integrin Beta 1 Antibody, VLA-4 subunit beta Antibody
<b>Family / Subfamily:</b>	Integrin / not assigned-Integrin
<b>Host</b>	ITGB1 antibody was produced in Mouse
<b>Clonality:</b>	Monoclonal
<b>Isotype:</b>	IgG1,k
<b>Clone Name:</b>	4B7R
<b>Conjugations:</b>	R. Phycoerythrin (RPE)
<b>Immunogen Species:</b>	ITGB1 / Integrin Beta 1 / CD29 antibody was raised against Human
<b>Immunogen:</b>	ITGB1 / Integrin Beta 1 / CD29 antibody was raised against human ocular melanoma cell line, V+B2.
<b>Specificity:</b>	CD29 integrin subunit. It has been reported to work in Western blot under non reducing conditions at a concentration of 1-2 ug/ml.
<b>Reactivity:</b>	Human
<b>Purification:</b>	Gel filtration
<b>Presentation:</b>	50 mM sodium phosphate, pH 7.5, 500 mM potassium chloride, 150 mM sodium chloride, 15% Glycerol, 0.2% BSA, 0.04% sodium azide
<b>Recommended Storage:</b>	Store at +4°C. Do not freeze. Product is photosensitive and should be protected from light.
<b>Uses:</b>	IHC - Paraffin, Western blot, Flow Cytometry (Optimal dilution to be determined by the researcher)
<b>Size:</b>	120 tst

**Flow Cytometry Image:**

Binding of anti-CD29/PE to human Nalm-6 cells



Flow cytometry of ITGB1 / Integrin Beta 1 / CD29 antibody

**Requested From:**

Japan

Laboratory Reagent For In Vitro Research Use Only

Not for resale without prior written consent from LifeSpan BioSciences, Inc.

Created on 9/25/2014

© 2014 LifeSpan BioSciences