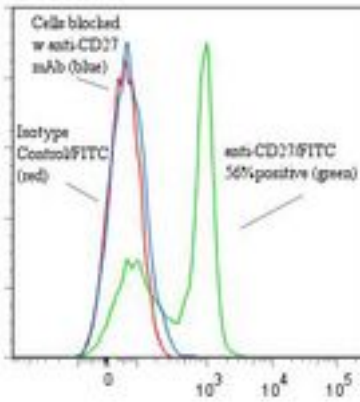


**CD27 Mouse anti-Human Monoclonal (FITC) (M-T271) Antibody - LS-C134359 - LSBio**

<b>CatalogID:</b>	LS-C134359
<b>Target:</b>	CD27 molecule
<b>Synonyms:</b>	CD27 Antibody, CD27 antigen Antibody, CD27 molecule Antibody, S152 Antibody, T14 Antibody, T-cell activation antigen CD27 Antibody, CD27L receptor Antibody, T cell activation antigen S152 Antibody, TNFRSF7 Antibody, Tp55 Antibody
<b>Family / Subfamily:</b>	TNF Receptor / not assigned-TNF Receptor
<b>Host</b>	CD27 antibody was produced in Mouse
<b>Clonality:</b>	Monoclonal
<b>Isotype:</b>	IgG1
<b>Clone Name:</b>	M-T271
<b>Conjugations:</b>	Fluorescein (FITC)
<b>Immunogen Species:</b>	CD27 antibody was raised against Human
<b>Immunogen:</b>	CD27 antibody was raised against t cell line (from patient with CLL).
<b>Specificity:</b>	Dimeric CD27 molecule of approximately 110 kd but does not block the interaction between CD70 and CD27. Clone M-T271 has been shown to abrogate IL-4 production or induce apoptosis in MLR.
<b>Reactivity:</b>	Human
<b>Purification:</b>	Protein A purified
<b>Presentation:</b>	50 mM sodium phosphate, pH 7.5, 100 mM potassium chloride, 150 mM sodium chloride, 5% Glycerol, 0.2% BSA, 0.04% sodium azide
<b>Recommended Storage:</b>	Store at +4°C. Do not freeze. Product is photosensitive and should be protected from light.
<b>Uses:</b>	Flow Cytometry, ELISA (Optimal dilution to be determined by the researcher)
<b>Size:</b>	120 tst

**Flow Cytometry Image:**

**Binding of anti-CD27/FITC to human PBMC**



Flow cytometry of CD27 antibody

**Requested From:**

Japan

Laboratory Reagent For In Vitro Research Use Only

Not for resale without prior written consent from LifeSpan BioSciences, Inc.

Created on 9/25/2014

© 2014 LifeSpan BioSciences