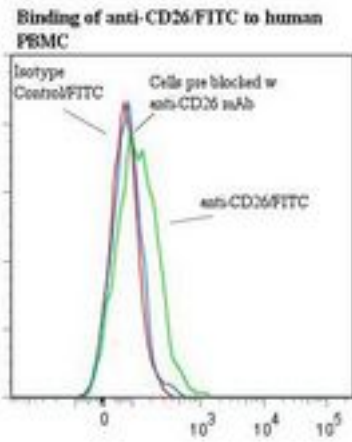


DPP4 / CD26 Mouse anti-Human Monoclonal (FITC) (202.36) Antibody - LS-C134354 - LSBio	
CatalogID:	LS-C134354
Target:	dipeptidyl-peptidase 4 (DPP4)
Synonyms:	DPP4 Antibody, ADCP-2 Antibody, ADABP Antibody, Dipeptidyl peptidase IV Antibody, Dipeptidyl-peptidase 4 Antibody, DPPIV Antibody, ADCP2 Antibody, T-cell activation antigen CD26 Antibody, CD26 Antibody, CD26 antigen Antibody, Dipeptidyl peptidase 4 Antibody, Dipeptidylpeptidase 4 Antibody, DPP IV Antibody, TP103 Antibody
Family / Subfamily:	Protease / Serine S9B
Host	DPP4 antibody was produced in Mouse
Clonality:	Monoclonal
Isotype:	IgG2b
Clone Name:	202.36
Conjugations:	Fluorescein (FITC)
Immunogen Species:	DPP4 / CD26 antibody was raised against Human
Antigen Type:	Cells
Immunogen:	DPP4 / CD26 antibody was raised against human T cell clone.
Specificity:	Type II membrane protein CD26.
Reactivity:	Human
Purification:	Protein A purified
Presentation:	50 mM sodium phosphate, pH 7.5, 100 mM potassium chloride, 150 mM sodium chloride, 5% Glycerol, 0.2% BSA, 0.04% sodium azide
Recommended Storage:	Store at +4°C. Do not freeze. Product is photosensitive and should be protected from light.
Uses:	Flow Cytometry (Optimal dilution to be determined by the researcher)
Size:	120 tst

Flow Cytometry Image:



Flow cytometry of DPP4 / CD26 antibody

Requested From:

Japan

Laboratory Reagent For In Vitro Research Use Only

Not for resale without prior written consent from LifeSpan BioSciences, Inc.

Created on 9/25/2014

© 2014 LifeSpan BioSciences