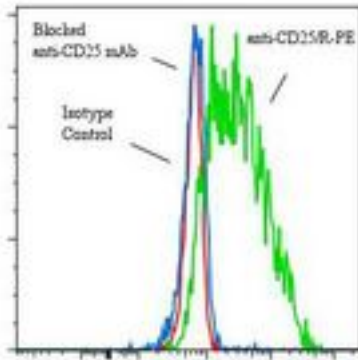


IL2RA / CD25 Mouse anti-Human Monoclonal (RPE) (7G7B6) Antibody - LS-C134349 - LSBio	
CatalogID:	LS-C134349
Target:	interleukin 2 receptor, alpha (IL2RA)
Synonyms:	IL2RA Antibody, CD25 antigen Antibody, CD25 Antibody, IDDM10 Antibody, IL-2 receptor subunit alpha Antibody, IL2R Antibody, Interleukin 2 receptor, alpha Antibody, IL-2-RA Antibody, IL2-RA Antibody, TCGFR Antibody, IL-2R subunit alpha Antibody, p55 Antibody, TAC antigen Antibody
Family / Subfamily:	Interleukin
Host	IL2RA antibody was produced in Mouse
Clonality:	Monoclonal
Isotype:	IgG2a
Clone Name:	7G7B6
Conjugations:	R. Phycoerythrin (RPE)
Immunogen Species:	IL2RA / CD25 antibody was raised against Human
Immunogen:	IL2RA / CD25 antibody was raised against stimulated PBMC.
Specificity:	Epitope B of the IL-2 alpha receptor of about 55 kd.
Reactivity:	Human
Purification:	Gel filtration
Presentation:	50 mM sodium phosphate, pH 7.5, 500 mM potassium chloride, 150 mM sodium chloride, 15% Glycerol, 0.2% BSA, 0.04% sodium azide
Recommended Storage:	Store at +4°C. Do not freeze. Product is photosensitive and should be protected from light.
Uses:	IHC, Flow Cytometry (Optimal dilution to be determined by the researcher)
Size:	120 tst

Flow Cytometry Image:

Binding of anti-CD25/R-PE to Stimulated CEM cells



Flow cytometry of IL2RA / CD25 antibody

Requested From:

Japan

Laboratory Reagent For In Vitro Research Use Only

Not for resale without prior written consent from LifeSpan BioSciences, Inc.

Created on 9/25/2014

© 2014 LifeSpan BioSciences