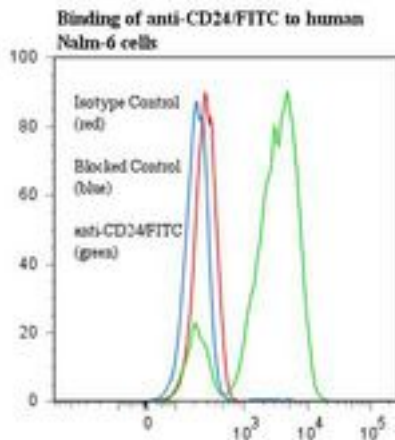


CD24 Mouse anti-Human Monoclonal (FITC) (BA-1) Antibody - LS-C134344 - LSBio

<b>CatalogID:</b>	LS-C134344
<b>Target:</b>	CD24 molecule
<b>Synonyms:</b>	CD24 Antibody, CD24 molecule Antibody, CD24A Antibody, Signal transducer CD24 Antibody, CD24 antigen Antibody
<b>Host</b>	CD24 antibody was produced in Mouse
<b>Clonality:</b>	Monoclonal
<b>Isotype:</b>	IgM
<b>Clone Name:</b>	BA-1
<b>Conjugations:</b>	Fluorescein (FITC)
<b>Immunogen Species:</b>	CD24 antibody was raised against Human
<b>Immunogen:</b>	CD24 antibody was raised against human B lymphocyte tumor cells: NALM-6-M1.
<b>Specificity:</b>	Sialic acid-dependent epitope of human CD24 of approximately 35/45 kd.
<b>Reactivity:</b>	Human
<b>Purification:</b>	Gel filtration
<b>Presentation:</b>	50 mM sodium phosphate, pH 7.5, 500 mM potassium chloride, 150 mM sodium chloride, 5% Glycerol, 0.2% BSA, 0.04% sodium azide
<b>Recommended Storage:</b>	Store at +4°C. Do not freeze. Product is photosensitive and should be protected from light.
<b>Uses:</b>	Flow Cytometry (Optimal dilution to be determined by the researcher)
<b>Size:</b>	120 µg

**Flow Cytometry Image:**



Flow cytometry of CD24 antibody

<b>Requested From:</b>	Japan
Laboratory Reagent For In Vitro Research Use Only	
Not for resale without prior written consent from LifeSpan BioSciences, Inc.	
Created on 9/25/2014	
© 2014 LifeSpan BioSciences	