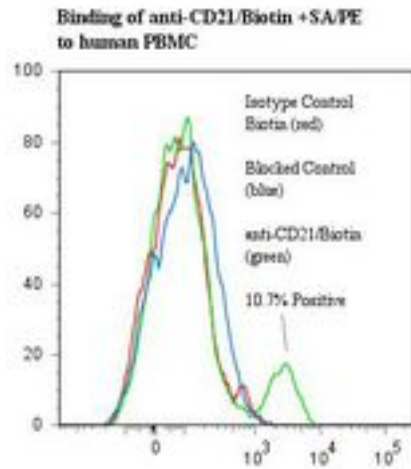


CR2 / CD21 Mouse anti-Human Monoclonal (FITC) (BU33) Antibody - LS-C134329 - LSBio	
CatalogID:	LS-C134329
Target:	complement component (3d/Epstein Barr virus) receptor 2 (CR2)
Synonyms:	CR2 Antibody, C3DR Antibody, CD21 antigen Antibody, CVID7 Antibody, Complement receptors type 2 Antibody, CD21 Antibody, Complement C3d receptor Antibody, EBV receptor Antibody, SLEB9 Antibody, Complement receptor type 2 Antibody, CR Antibody, Epstein-Barr virus receptor Antibody
Host	CR2 antibody was produced in Mouse
Clonality:	Monoclonal
Isotype:	IgG1
Clone Name:	BU33
Conjugations:	Fluorescein (FITC)
Immunogen Species:	CR2 / CD21 antibody was raised against Human
Immunogen:	CR2 / CD21 antibody was raised against human HFB-1 cell line.
Specificity:	CD21 molecule of about 145 kd.
Reactivity:	Human
Purification:	Protein A purified
Presentation:	50 mM sodium phosphate, pH 7.5, 100 mM potassium chloride, 150 mM sodium chloride, 5% Glycerol, 0.2% BSA, 0.04% sodium azide
Recommended Storage:	Store at +4°C. DO NOT FREEZE.
Usage Summary:	Function: Inhibits binding to CD23.
Uses:	Western blot, Flow Cytometry, Functional Assay (Optimal dilution to be determined by the researcher)
Size:	120 tst

Flow Cytometry Image:



Flow cytometry of CR2 / CD21 antibody

Requested From:

Japan

Laboratory Reagent For In Vitro Research Use Only

Not for resale without prior written consent from LifeSpan BioSciences, Inc.

Created on 9/25/2014

© 2014 LifeSpan BioSciences