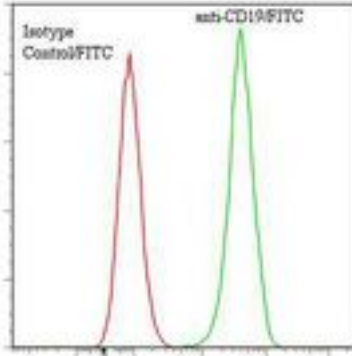


**CD19 Mouse anti-Human Monoclonal (FITC) (BU12) Antibody - LS-C134319 - LSBio**

|                             |  |
|-----------------------------|--|
| <b>CatalogID:</b>           | LS-C134319   |
| <b>Target:</b>              | CD19 molecule  |
| <b>Synonyms:</b>            | CD19 Antibody, B-lymphocyte antigen CD19 Antibody, CD19 molecule Antibody, Differentiation antigen CD19 Antibody, T-cell surface antigen Leu-12 Antibody, B4 Antibody, CD19 antigen Antibody, CVID3 Antibody |
| <b>Host</b>                 | CD19 antibody was produced in Mouse  |
| <b>Clonality:</b>           | Monoclonal   |
| <b>Isotype:</b>             | IgG1   |
| <b>Clone Name:</b>          | BU12   |
| <b>Conjugations:</b>        | Fluorescein (FITC)   |
| <b>Immunogen Species:</b>   | CD19 antibody was raised against Human   |
| <b>Immunogen:</b>           | CD19 antibody was raised against human EB-4 Burkitt lymphoma cell line.  |
| <b>Specificity:</b>         | CD19 molecule of about 95 kd.  |
| <b>Reactivity:</b>          | Human  |
| <b>Purification:</b>        | Protein A purified   |
| <b>Presentation:</b>        | 50 mM sodium phosphate, pH 7.5, 100 mM potassium chloride, 150 mM sodium chloride, 5% Glycerol, 0.2% BSA, 0.04% sodium azide   |
| <b>Recommended Storage:</b> | Store at +4°C. Do not freeze. Product is photosensitive and should be protected from light.  |
| <b>Usage Summary:</b>       | Function: Induces adhesion of B cells.   |
| <b>Uses:</b>                | Flow Cytometry, Functional Assay (Optimal dilution to be determined by the researcher)   |
| <b>Size:</b>                | 120 tst  |

**Flow Cytometry Image:**

Binding of anti-CD19/FITC to human  
Raji cells



Flow cytometry of CD19 antibody

**Requested From:**

Japan

Laboratory Reagent For In Vitro Research Use Only

Not for resale without prior written consent from LifeSpan BioSciences, Inc.

Created on 9/25/2014

© 2014 LifeSpan BioSciences