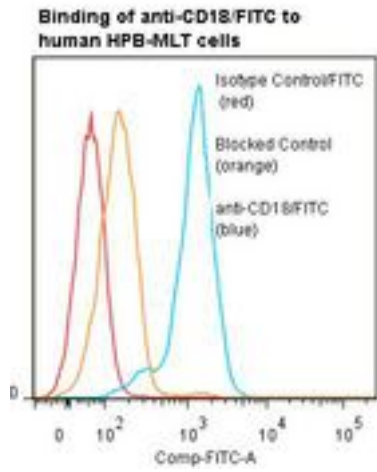


ITGB2 / MAC-1 / CD18 Mouse anti-Human Monoclonal (FITC) (IB4) Antibody - LS-C134313 - LSBio	
CatalogID:	LS-C134313
Target:	integrin, beta 2 (complement component 3 receptor 3 and 4 subunit) (ITGB2)
Synonyms:	ITGB2 Antibody, CD18 antigen Antibody, CD18 Antibody, Integrin beta chain, beta 2 Antibody, LCAMB Antibody, MAC-1 Antibody, MF17 Antibody, MF17 Antibody, Integrin beta-2 Antibody, LAD Antibody, LFA-1 Antibody
Family / Subfamily:	Integrin / not assigned-Integrin
Host	ITGB2 antibody was produced in Mouse
Clonality:	Monoclonal
Isotype:	IgG2a
Clone Name:	IB4
Conjugations:	Fluorescein (FITC)
Immunogen Species:	ITGB2 / MAC-1 / CD18 antibody was raised against Human
Immunogen:	ITGB2 / MAC-1 / CD18 antibody was raised against human peripheral blood monocytes.
Specificity:	Beta 2 integrin subunit (CD18) adhesion molecule of about 95 kd.
Reactivity:	Human
Purification:	Protein A purified
Presentation:	50 mM sodium phosphate, pH 7.5, 100 mM potassium chloride, 150 mM sodium chloride, 5% Glycerol, 0.2% BSA, 0.04% sodium azide
Recommended Storage:	Store at +4°C. Do not freeze. Product is photosensitive and should be protected from light.
Usage Summary:	Function: Blocks binding of ICAM-1 and ICAM-3 to LFA-1
Uses:	Flow Cytometry, Functional Assay (Optimal dilution to be determined by the researcher)
Size:	120 tst

Flow Cytometry Image:



Flow cytometry of ITGB2 / MAC-1 / CD18 antibody

Requested From:

Japan

Laboratory Reagent For In Vitro Research Use Only

Not for resale without prior written consent from LifeSpan BioSciences, Inc.

Created on 9/25/2014

© 2014 LifeSpan BioSciences