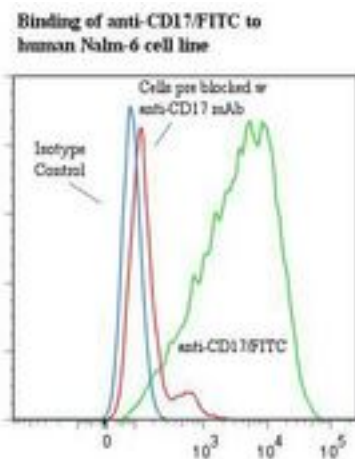


CD17 / Lactosylceramide Mouse anti-Human Monoclonal (FITC) (Huly-m13) Antibody - LS-C134309 - LSBio

CatalogID:	LS-C134309
Target:	CD17 / Lactosylceramide
Host	Mouse
Clonality:	Monoclonal
Isotype:	IgM
Clone Name:	Huly-m13
Conjugations:	Fluorescein (FITC)
Immunogen Species:	Human
Antigen Type:	Protein extract
Immunogen:	Human beta-2 microglobulin associated proteins from a detergent lysate of PBL.
Specificity:	CD17 on myeloid cells.
Reactivity:	Human
Purification:	Gel filtration
Presentation:	50 mM sodium phosphate, pH 7.5, 100 mM potassium chloride, 500 mM sodium chloride, 5% Glycerol, 0.2% BSA, 0.04% sodium azide
Recommended Storage:	Store at +4°C. Do not freeze. Product is photosensitive and should be protected from light.
Uses:	Flow Cytometry (Optimal dilution to be determined by the researcher)
Size:	120 tst

Flow Cytometry Image:



Flow cytometry of CD17 / Lactosylceramide antibody

Requested From:	Japan
Laboratory Reagent For In Vitro Research Use Only	
Not for resale without prior written consent from LifeSpan BioSciences, Inc.	
Created on 9/25/2014	
© 2014 LifeSpan BioSciences	