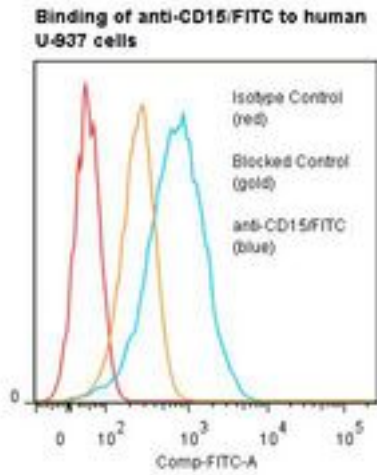


SSEA-1 / Lewis x / CD15 Mouse anti-Human Monoclonal (FITC) (AHN1.1) Antibody - LS-C134298 - LSBio	
CatalogID:	LS-C134298
Target:	Stage-Specific Embryonic Antigen-1/Lewis X/CD15
Host	Mouse
Clonality:	Monoclonal
Isotype:	IgM
Clone Name:	AHN1.1
Conjugations:	Fluorescein (FITC)
Immunogen Species:	Human
Antigen Type:	Cells
Immunogen:	Human neutrophils.
Specificity:	Terminal pentasaccharide lacto-N-fucopentaose III known as Lewis X.
Reactivity:	Human
Purification:	Gel filtration
Presentation:	50 mM sodium phosphate, pH 7.5, 500 mM potassium chloride, 150 mM sodium chloride, 5% Glycerol, 0.2% BSA, 0.04% sodium azide
Recommended Storage:	Store at +4°C. Do not freeze. Product is photosensitive and should be protected from light.
Usage Summary:	Function: Activates normal monocytes and inhibits neutrophil chemotaxis.
Uses:	Functional Assay (Optimal dilution to be determined by the researcher)
Size:	120 tst

Flow Cytometry Image:



Flow cytometry of SSEA-1 / Lewis x / CD15 antibody

Requested From:

Japan

Laboratory Reagent For In Vitro Research Use Only

Not for resale without prior written consent from LifeSpan BioSciences, Inc.

Created on 9/25/2014

© 2014 LifeSpan BioSciences