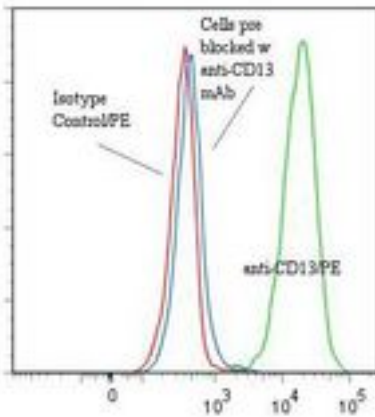


| ANPEP / CD13 Mouse anti-Human Monoclonal (RPE) (22A5) Antibody - LS-C134289 - LSBio |  |
|---|--|
| <b>CatalogID:</b>   | LS-C134289   |
| <b>Target:</b>  | alanyl (membrane) aminopeptidase (ANPEP)   |
| <b>Synonyms:</b>  | ANPEP Antibody, Alanyl aminopeptidase Antibody, Aminopeptidase M Antibody, APN Antibody, Aminopeptidase N Antibody, AP-N Antibody, AP-M Antibody, CD13 Antibody, CD13 antigen Antibody, HAPN Antibody, gp150 Antibody, p150 Antibody, PEPN Antibody, Microsomal aminopeptidase Antibody, LAP1 Antibody |
| <b>Family / Subfamily:</b>  | Exopeptidase / Metallopeptidase M1   |
| <b>Host</b>   | ANPEP antibody was produced in Mouse   |
| <b>Clonality:</b>   | Monoclonal   |
| <b>Isotype:</b>   | IgG2a,k  |
| <b>Clone Name:</b>  | 22A5   |
| <b>Conjugations:</b>  | R. Phycoerythrin (RPE)   |
| <b>Immunogen Species:</b>   | ANPEP / CD13 antibody was raised against Human   |
| <b>Antigen Type:</b>  | Cells  |
| <b>Immunogen:</b>   | ANPEP / CD13 antibody was raised against human osteosarcoma tissue.  |
| <b>Specificity:</b>   | Cell surface aminopeptidase-N enzyme.  |
| <b>Reactivity:</b>  | Human  |
| <b>Purification:</b>  | Gel filtration   |
| <b>Presentation:</b>  | 50 mM sodium phosphate, pH 7.5, 500 mM potassium chloride, 150 mM sodium chloride, 15% Glycerol, 0.2% BSA, 0.04% sodium azide  |
| <b>Recommended Storage:</b>   | Store at +4°C. Do not freeze. Product is photosensitive and should be protected from light.  |
| <b>Uses:</b>  | IHC - Paraffin, Flow Cytometry (Optimal dilution to be determined by the researcher)   |
| <b>Size:</b>  | 120 tst  |

**Flow Cytometry Image:**

**Binding of anti-CD13/PE to human THP-1 cells**



Flow cytometry of ANPEP / CD13 antibody

**Requested From:**

Japan

Laboratory Reagent For In Vitro Research Use Only

Not for resale without prior written consent from LifeSpan BioSciences, Inc.

Created on 9/25/2014

© 2014 LifeSpan BioSciences