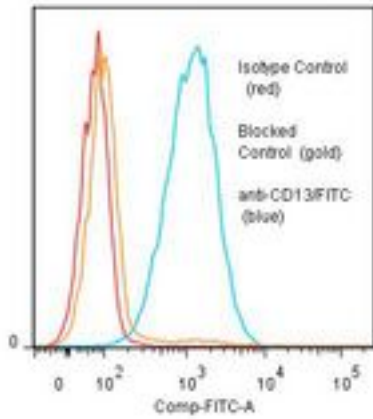


ANPEP / CD13 Mouse anti-Human Monoclonal (FITC) (22A5) Antibody - LS-C134288 - LSBio

CatalogID:	LS-C134288
Target:	alanyl (membrane) aminopeptidase (ANPEP)
Synonyms:	ANPEP Antibody, Alanyl aminopeptidase Antibody, Aminopeptidase M Antibody, APN Antibody, Aminopeptidase N Antibody, AP-N Antibody, AP-M Antibody, CD13 Antibody, CD13 antigen Antibody, HAPN Antibody, gp150 Antibody, p150 Antibody, PEPN Antibody, Microsomal aminopeptidase Antibody, LAP1 Antibody
Family / Subfamily:	Exopeptidase / Metallopeptidase M1
Host	ANPEP antibody was produced in Mouse
Clonality:	Monoclonal
Isotype:	IgG2a,k
Clone Name:	22A5
Conjugations:	Fluorescein (FITC)
Immunogen Species:	ANPEP / CD13 antibody was raised against Human
Antigen Type:	Cells
Immunogen:	ANPEP / CD13 antibody was raised against human osteosarcoma tissue.
Specificity:	Cell surface aminopeptidase-N enzyme.
Reactivity:	Human
Purification:	Protein A purified
Presentation:	50 mM sodium phosphate, pH 7.5, 100 mM potassium chloride, 150 mM sodium chloride, 5% Glycerol, 0.2% BSA, 0.04% sodium azide
Recommended Storage:	Store at +4°C. Do not freeze. Product is photosensitive and should be protected from light.
Uses:	IHC - Paraffin, Flow Cytometry (Optimal dilution to be determined by the researcher)
Size:	120 tst

Flow Cytometry Image:

Binding of anti-CD13/FITC to human THP-1 cells



Flow cytometry of ANPEP / CD13 antibody

Requested From:

Japan

Laboratory Reagent For In Vitro Research Use Only

Not for resale without prior written consent from LifeSpan BioSciences, Inc.

Created on 9/25/2014

© 2014 LifeSpan BioSciences