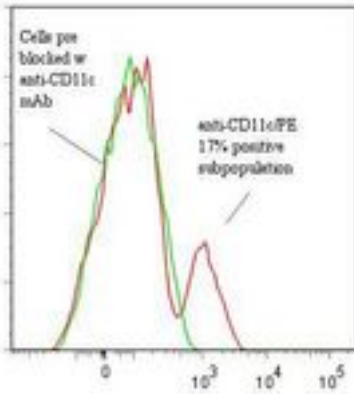


ITGAX / CD11c Mouse anti-Human Monoclonal (RPE) (3.9) Antibody - LS-C134284 - LSBio	
CatalogID:	LS-C134284
Target:	integrin, alpha X (complement component 3 receptor 4 subunit) (ITGAX)
Synonyms:	ITGAX Antibody, CD11c antigen Antibody, Integrin alpha-X Antibody, Leu M5, alpha subunit Antibody, p150 95 integrin alpha chain Antibody, SLEB6 Antibody, CD11C Antibody, Leu M5 Antibody
Family / Subfamily:	Integrin / not assigned-Integrin
Host	ITGAX antibody was produced in Mouse
Clonality:	Monoclonal
Isotype:	IgG1
Clone Name:	3.9
Conjugations:	R. Phycoerythrin (RPE)
Immunogen Species:	ITGAX / CD11c antibody was raised against Human
Immunogen:	ITGAX / CD11c antibody was raised against human rheumatoid synovial fluid cells/monocytes.
Specificity:	Integrin alpha X subunit (CD11c) of about 150 kd.
Reactivity:	Human
Purification:	Protein A purified
Presentation:	50 mM sodium phosphate, pH 7.5, 500 mM potassium chloride, 150 mM sodium chloride, 15% Glycerol, 0.2% BSA, 0.04% sodium azide
Recommended Storage:	Store at +4°C. Do not freeze. Product is photosensitive and should be protected from light.
Uses:	Flow Cytometry (Optimal dilution to be determined by the researcher)
Size:	120 tst

Flow Cytometry Image:

Binding of anti-CD11c/R-PE to human PBMC



Flow cytometry of ITGAX / CD11c antibody

Requested From:

Japan

Laboratory Reagent For In Vitro Research Use Only

Not for resale without prior written consent from LifeSpan BioSciences, Inc.

Created on 9/25/2014

© 2014 LifeSpan BioSciences