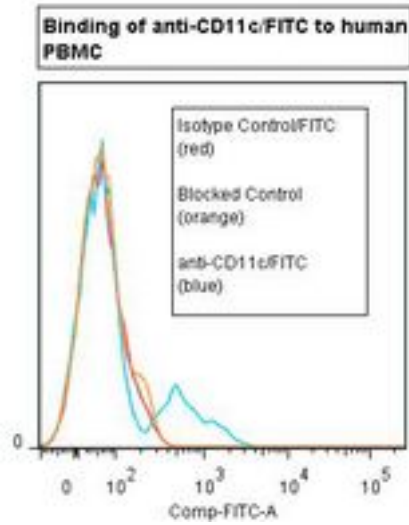


ITGAX / CD11c Mouse anti-Human Monoclonal (FITC) (3.9) Antibody - LS-C134283 - LSBio	
<b>CatalogID:</b>	LS-C134283
<b>Target:</b>	integrin, alpha X (complement component 3 receptor 4 subunit) (ITGAX)
<b>Synonyms:</b>	ITGAX Antibody, CD11c antigen Antibody, Integrin alpha-X Antibody, Leu M5, alpha subunit Antibody, p150 95 integrin alpha chain Antibody, SLEB6 Antibody, CD11C Antibody, Leu M5 Antibody
<b>Family / Subfamily:</b>	Integrin / not assigned-Integrin
<b>Host</b>	ITGAX antibody was produced in Mouse
<b>Clonality:</b>	Monoclonal
<b>Isotype:</b>	IgG1
<b>Clone Name:</b>	3.9
<b>Conjugations:</b>	Fluorescein (FITC)
<b>Immunogen Species:</b>	ITGAX / CD11c antibody was raised against Human
<b>Immunogen:</b>	ITGAX / CD11c antibody was raised against human rheumatoid synovial fluid cells/monocytes.
<b>Specificity:</b>	Integrin alpha X subunit (CD11c) of about 150 kd.
<b>Reactivity:</b>	Human
<b>Purification:</b>	Protein A purified
<b>Presentation:</b>	50 mM sodium phosphate, pH 7.5, 100 mM potassium chloride, 150 mM sodium chloride, 5% Glycerol, 0.2% BSA, 0.04% sodium azide
<b>Recommended Storage:</b>	Store at +4°C. Do not freeze. Product is photosensitive and should be protected from light.
<b>Uses:</b>	Flow Cytometry (Optimal dilution to be determined by the researcher)
<b>Size:</b>	120 tst

**Flow Cytometry Image:**



Flow cytometry of ITGAX / CD11c antibody

**Requested From:**

Japan

Laboratory Reagent For In Vitro Research Use Only

Not for resale without prior written consent from LifeSpan BioSciences, Inc.

Created on 9/25/2014

© 2014 LifeSpan BioSciences