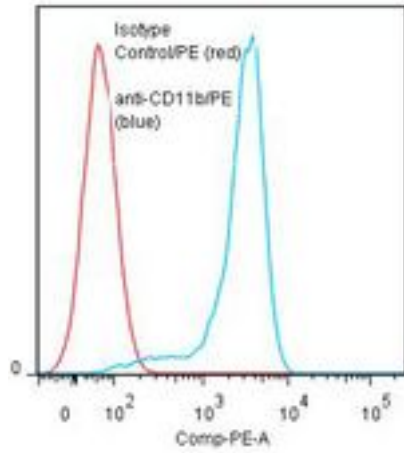


ITGAM / CD11b Mouse anti-Human Monoclonal (RPE) (ICR44) Antibody - LS-C134279 - LSBio	
CatalogID:	LS-C134279
Target:	integrin, alpha M (complement component 3 receptor 3 subunit) (ITGAM)
Synonyms:	ITGAM Antibody, Antigen CD11b (p170) Antibody, CD11B Antibody, CD11b antigen Antibody, CR3A Antibody, Integrin alpha-M Antibody, MAC-1 Antibody, MO1A Antibody, Neutrophil adherence receptor Antibody, MAC1A Antibody, SLEB6 Antibody, CR-3 alpha chain Antibody
Family / Subfamily:	Integrin / not assigned-Integrin
Host	ITGAM antibody was produced in Mouse
Clonality:	Monoclonal
Isotype:	IgG1
Clone Name:	ICR44
Conjugations:	R. Phycoerythrin (RPE)
Immunogen Species:	ITGAM / CD11b antibody was raised against Human
Antigen Type:	Cells
Immunogen:	ITGAM / CD11b antibody was raised against human monocytes.
Specificity:	Integrin alpha M subunit (CD11b) of about 165 kd.
Reactivity:	Human
Purification:	Gel filtration
Presentation:	50 mM sodium phosphate, pH 7.5, 500 mM potassium chloride, 150 mM sodium chloride, 15% Glycerol, 0.2% BSA, 0.04% sodium azide
Recommended Storage:	Store at +4°C. Do not freeze. Product is photosensitive and should be protected from light.
Usage Summary:	Function: Blocks homotypic neutrophil and monocyte (FMLP induced) aggregation.
Uses:	Flow Cytometry, Functional Assay (Optimal dilution to be determined by the researcher)
Size:	120 tst

Flow Cytometry Image:

Binding of anti-CD11b/PE to human monocyte derived Dendritic cells



Flow cytometry of ITGAM / CD11b antibody

Requested From:

Japan

Laboratory Reagent For In Vitro Research Use Only

Not for resale without prior written consent from LifeSpan BioSciences, Inc.

Created on 9/25/2014

© 2014 LifeSpan BioSciences