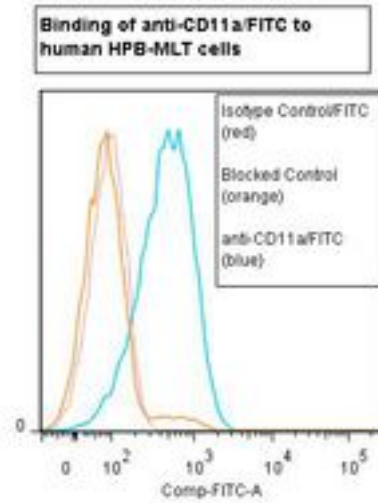


LFA-1 / CD11A Mouse anti-Human Monoclonal (FITC) (38) Antibody - LS-C134273 - LSBio

<b>CatalogID:</b>	LS-C134273
<b>Target:</b>	integrin, alpha L (antigen CD11A (p180), lymphocyte function-associated antigen 1; alpha polypeptide) (ITGAL)
<b>Synonyms:</b>	ITGAL Antibody, CD11A Antibody, Integrin alpha-L Antibody, LFA-1 alpha Antibody, LFA-1A Antibody, Integrin gene promoter Antibody, Alpha polypeptide) Antibody, CD11a antigen Antibody, LFA-1 Antibody, LFA1A Antibody
<b>Family / Subfamily:</b>	Integrin / not assigned-Integrin
<b>Host</b>	ITGAL antibody was produced in Mouse
<b>Clonality:</b>	Monoclonal
<b>Isotype:</b>	IgG2a
<b>Clone Name:</b>	38
<b>Conjugations:</b>	Fluorescein (FITC)
<b>Immunogen Species:</b>	LFA-1 / CD11A antibody was raised against Human
<b>Antigen Type:</b>	Cells
<b>Immunogen:</b>	LFA-1 / CD11A antibody was raised against human monocytes.
<b>Specificity:</b>	I domain of the integrin alpha L subunit (CD11a) of about 180 kd.
<b>Reactivity:</b>	Human
<b>Purification:</b>	Protein A purified
<b>Presentation:</b>	50 mM sodium phosphate, pH 7.5, 100 mM potassium chloride, 150 mM sodium chloride, 5% Glycerol, 0.2% BSA, 0.04% sodium azide
<b>Recommended Storage:</b>	Store at +4°C. Do not freeze. Product is photosensitive and should be protected from light.
<b>Usage Summary:</b>	Function: Blocks binding of ICAM-1 and ICAM-3 to LFA-1 at 5-10 ug/ml.
<b>Uses:</b>	Western blot, Flow Cytometry, Functional Assay (Optimal dilution to be determined by the researcher)
<b>Size:</b>	120 tst

**Flow Cytometry Image:**



Flow cytometry of LFA-1 / CD11a antibody

**Requested From:**

Japan

Laboratory Reagent For In Vitro Research Use Only

Not for resale without prior written consent from LifeSpan BioSciences, Inc.

Created on 9/25/2014

© 2014 LifeSpan BioSciences