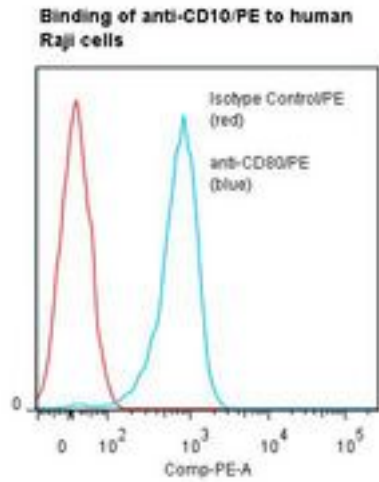


| MME / CD10 Mouse anti-Human Monoclonal (RPE) (SN5c/L4-1A1) Antibody - LS-C134269 - LSBio |  |
|--|--|
| <b>CatalogID:</b>  | LS-C134269   |
| <b>Target:</b>   | membrane metallo-endoropeptidase (MME)   |
| <b>Synonyms:</b>   | MME Antibody, Atriopeptidase Antibody, CALLA Antibody, CD10 Antibody, EPN Antibody, Membrane metallo-endoropeptidase Antibody, NEP Antibody, Nepriylisin Antibody, Neutral endopeptidase Antibody, Neutral endopeptidase 24.11 Antibody, CD10 antigen Antibody, Enkephalinase Antibody, Neprylisin Antibody, SFE Antibody, Skin fibroblast elastase Antibody |
| <b>Family / Subfamily:</b>   | Protease / Metallopeptidase M13  |
| <b>Host</b>  | MME antibody was produced in Mouse   |
| <b>Clonality:</b>  | Monoclonal   |
| <b>Isotype:</b>  | IgG1,k   |
| <b>Clone Name:</b>   | SN5c/L4-1A1  |
| <b>Conjugations:</b>   | R. Phycoerythrin (RPE)   |
| <b>Immunogen Species:</b>  | MME / CD10 antibody was raised against Human   |
| <b>Immunogen:</b>  | MME / CD10 antibody was raised against membrane preparation of human B-lineage leukemia cells.   |
| <b>Specificity:</b>  | 100 kd membrane-associated peptidase CD10.   |
| <b>Reactivity:</b>   | Human  |
| <b>Purification:</b>   | Gel filtration   |
| <b>Presentation:</b>   | 50 mM sodium phosphate, pH 7.5, 500 mM potassium chloride, 150 mM sodium chloride, 15% Glycerol, 0.2% BSA, 0.04% sodium azide  |
| <b>Recommended Storage:</b>  | Store at +4°C. Do not freeze. Product is photosensitive and should be protected from light.  |
| <b>Uses:</b>   | Western blot, Flow Cytometry (Optimal dilution to be determined by the researcher)   |
| <b>Size:</b>   | 120 tst  |

**Flow Cytometry Image:**



Flow cytometry of MME / CD10 antibody

**Requested From:**

Japan

Laboratory Reagent For In Vitro Research Use Only

Not for resale without prior written consent from LifeSpan BioSciences, Inc.

Created on 9/25/2014

© 2014 LifeSpan BioSciences