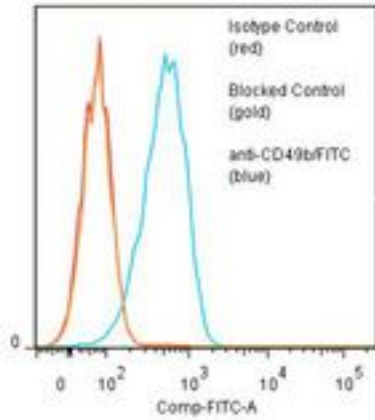


ITGA2 / CD49b Mouse anti-Human Monoclonal (FITC) (HAS6) Antibody - LS-C134258 - LSBio	
<b>CatalogID:</b>	LS-C134258
<b>Target:</b>	integrin, alpha 2 (CD49B, alpha 2 subunit of VLA-2 receptor) (ITGA2)
<b>Synonyms:</b>	ITGA2 Antibody, Alpha2 integrin Antibody, BR Antibody, CD49b antigen Antibody, CD49B Antibody, Integrin alpha2 Antibody, Integrin Alpha 2 Antibody, Integrin alpha-2 Antibody, HPA-5 Antibody, VLA-2 Antibody, VLAA2 Antibody, VLA-2 subunit alpha Antibody, Collagen receptor Antibody, GPIa Antibody, Platelet antigen Br Antibody, Platelet glycoprotein GPIa Antibody, VLA2 receptor, alpha-2 subunit Antibody
<b>Family / Subfamily:</b>	Integrin / not assigned-Integrin
<b>Host</b>	ITGA2 antibody was produced in Mouse
<b>Clonality:</b>	Monoclonal
<b>Isotype:</b>	IgG2a,k
<b>Clone Name:</b>	HAS6
<b>Conjugations:</b>	Fluorescein (FITC)
<b>Immunogen Species:</b>	ITGA2 / CD49b antibody was raised against Human
<b>Immunogen:</b>	ITGA2 / CD49b antibody was raised against human cultured keratinocytes.
<b>Specificity:</b>	Alpha 2 integrin subunit.
<b>Reactivity:</b>	Human
<b>Purification:</b>	Protein A purified
<b>Presentation:</b>	50 mM sodium phosphate, pH 7.5, 100 mM potassium chloride, 150 mM sodium chloride, 5% Glycerol, 0.2% BSA, 0.04% sodium azide
<b>Recommended Storage:</b>	Store at +4°C. Do not freeze. Product is photosensitive and should be protected from light.
<b>Uses:</b>	IHC, Flow Cytometry (Optimal dilution to be determined by the researcher)
<b>Size:</b>	120 tst

**Flow Cytometry Image:**

**Binding of anti-CD49b/FITC to human UM-SCC cells**



Flow cytometry of ITGA2 / CD49b antibody

**Requested From:**

Japan

Laboratory Reagent For In Vitro Research Use Only

Not for resale without prior written consent from LifeSpan BioSciences, Inc.

Created on 9/25/2014

© 2014 LifeSpan BioSciences