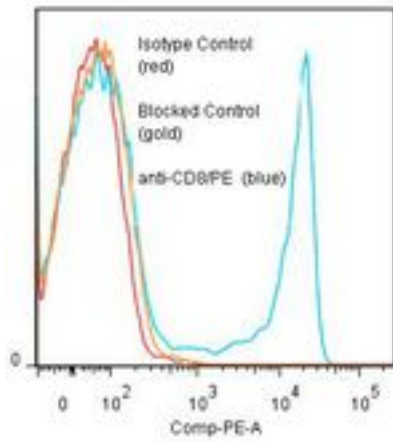


**CD8 Mouse anti-Human Monoclonal (RPE) (14) Antibody - LS-C134254 - LSBio**

|                             |   |
|-----------------------------|---|
| <b>CatalogID:</b>           | LS-C134254  |
| <b>Target:</b>              | CD8   |
| <b>Host</b>                 | CD8 antibody was produced in Mouse  |
| <b>Clonality:</b>           | Monoclonal  |
| <b>Isotype:</b>             | IgG1,k  |
| <b>Clone Name:</b>          | 14  |
| <b>Conjugations:</b>        | R. Phycoerythrin (RPE)  |
| <b>Immunogen Species:</b>   | CD8 antibody was raised against Human   |
| <b>Antigen Type:</b>        | Cells   |
| <b>Immunogen:</b>           | CD8 antibody was raised against human thymocytes.   |
| <b>Specificity:</b>         | CD8 alpha chain of approximately 33 kd.   |
| <b>Reactivity:</b>          | Human   |
| <b>Purification:</b>        | Gel filtration  |
| <b>Presentation:</b>        | 50 mM sodium phosphate, pH 7.5, 500 mM potassium chloride, 150 mM sodium chloride, 15% Glycerol, 0.3% BSA, 0.04% sodium azide |
| <b>Recommended Storage:</b> | Store at +4°C. Do not freeze. Product is photosensitive and should be protected from light.                                   |
| <b>Usage Summary:</b>       | ELISA: Detection.   |
| <b>Uses:</b>                | Flow Cytometry, ELISA (Optimal dilution to be determined by the researcher)   |
| <b>Size:</b>                | 120 tst   |

**Flow Cytometry Image:**

**Binding of anti-CD8/PE to human PBL**



Flow cytometry of CD8 antibody

**Requested From:**

Japan

Laboratory Reagent For In Vitro Research Use Only

Not for resale without prior written consent from LifeSpan BioSciences, Inc.

Created on 9/25/2014

© 2014 LifeSpan BioSciences