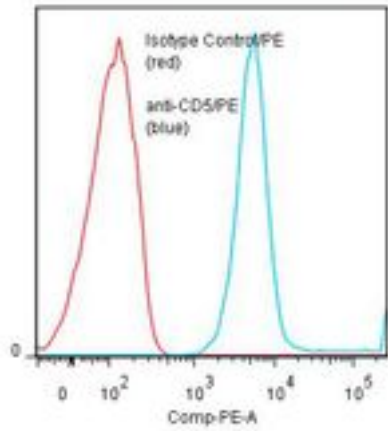


CD5 Mouse anti-Human Monoclonal (RPE) (UCHT2) Antibody - LS-C134234 - LSBio

<b>CatalogID:</b>	LS-C134234
<b>Target:</b>	CD5 molecule
<b>Synonyms:</b>	CD5 Antibody, CD5 antigen Antibody, CD5 antigen (p56-62) Antibody, CD5 molecule Antibody, Lymphocyte antigen T1/Leu-1 Antibody, LEU1 Antibody, T1 Antibody
<b>Host</b>	CD5 antibody was produced in Mouse
<b>Clonality:</b>	Monoclonal
<b>Isotype:</b>	IgG1
<b>Clone Name:</b>	UCHT2
<b>Conjugations:</b>	R. Phycoerythrin (RPE)
<b>Immunogen Species:</b>	CD5 antibody was raised against Human
<b>Antigen Type:</b>	Cells
<b>Immunogen:</b>	CD5 antibody was raised against human thymocytes/Sezary T cells.
<b>Specificity:</b>	Epitope 2 of the CD5 molecule of approximately 67 kd.
<b>Reactivity:</b>	Human
<b>Purification:</b>	Protein A purified
<b>Presentation:</b>	50 mM sodium phosphate, pH 7.5, 500 mM potassium chloride, 150 mM sodium chloride, 15% Glycerol, 0.2% BSA, 0.04% sodium azide
<b>Recommended Storage:</b>	Store at +4°C. Do not freeze. Product is photosensitive and should be protected from light.
<b>Usage Summary:</b>	Function: Does not stimulate CD5+ PBMNC.
<b>Uses:</b>	Flow Cytometry, Functional Assay (Optimal dilution to be determined by the researcher)
<b>Size:</b>	120 tst

**Flow Cytometry Image:**

**Binding of anti-CD5/PE to human CEM cells**



Flow cytometry of CD5 antibody

**Requested From:**

Japan

Laboratory Reagent For In Vitro Research Use Only

Not for resale without prior written consent from LifeSpan BioSciences, Inc.

Created on 9/25/2014

© 2014 LifeSpan BioSciences