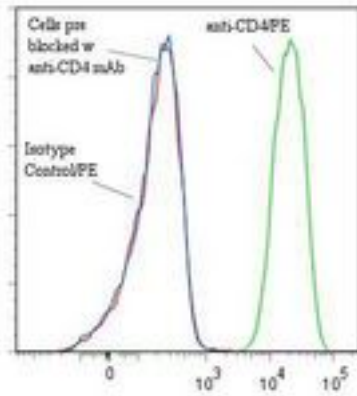


**CD4 Mouse anti-Human Monoclonal (RPE) (M-T441) Antibody - LS-C134228 - LSBio**

<b>CatalogID:</b>	LS-C134228
<b>Target:</b>	CD4 molecule
<b>Synonyms:</b>	CD4 Antibody, CD4 antigen Antibody, CD4 receptor Antibody, CD4mut Antibody, CD4 antigen (p55) Antibody, CD4 molecule Antibody
<b>Host</b>	CD4 antibody was produced in Mouse
<b>Clonality:</b>	Monoclonal
<b>Isotype:</b>	IgG2b
<b>Clone Name:</b>	M-T441
<b>Conjugations:</b>	R. Phycoerythrin (RPE)
<b>Immunogen Species:</b>	CD4 antibody was raised against Human
<b>Immunogen:</b>	CD4 antibody was raised against p815 cells transfected with human CD4.
<b>Specificity:</b>	Domain 2 region of the CD4 molecule and reacts with human CD4 cell transfectants.
<b>Reactivity:</b>	Human
<b>Purification:</b>	Gel filtration
<b>Presentation:</b>	50 mM sodium phosphate, pH 7.5, 500 mM potassium chloride, 150 mM sodium chloride, 15% Glycerol, 0.2% BSA, 0.04% sodium azide
<b>Recommended Storage:</b>	Store at +4°C. Do not freeze. Product is photosensitive and should be protected from light.
<b>Usage Summary:</b>	ELISA: Detection.
<b>Uses:</b>	Flow Cytometry, ELISA (Optimal dilution to be determined by the researcher)
<b>Size:</b>	120 tst

**Flow Cytometry Image:**

Binding of anti-CD4/PE to human HPB-MLT cells



Flow cytometry of CD4 antibody

**Requested From:**

Japan

Laboratory Reagent For In Vitro Research Use Only

Not for resale without prior written consent from LifeSpan BioSciences, Inc.

Created on 9/25/2014

© 2014 LifeSpan BioSciences