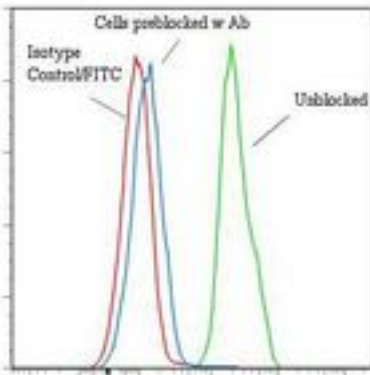


**CD4 Mouse anti-Human Monoclonal (FITC) (M-T441) Antibody - LS-C134227 - LSBio**

|                             |   |
|-----------------------------|---|
| <b>CatalogID:</b>           | LS-C134227  |
| <b>Target:</b>              | CD4 molecule  |
| <b>Synonyms:</b>            | CD4 Antibody, CD4 antigen Antibody, CD4 receptor Antibody, CD4mut Antibody, CD4 antigen (p55) Antibody, CD4 molecule Antibody |
| <b>Host</b>                 | CD4 antibody was produced in Mouse  |
| <b>Clonality:</b>           | Monoclonal  |
| <b>Isotype:</b>             | IgG2b   |
| <b>Clone Name:</b>          | M-T441  |
| <b>Conjugations:</b>        | Fluorescein (FITC)  |
| <b>Immunogen Species:</b>   | CD4 antibody was raised against Human   |
| <b>Immunogen:</b>           | CD4 antibody was raised against p815 cells transfected with human CD4.  |
| <b>Specificity:</b>         | Domain 2 region of the CD4 molecule and reacts with human CD4 cell transfectants.   |
| <b>Reactivity:</b>          | Human   |
| <b>Purification:</b>        | Protein A purified  |
| <b>Presentation:</b>        | 50 mM sodium phosphate, pH 7.5, 100 mM potassium chloride, 150 mM sodium chloride, 5% Glycerol, 0.2% BSA, 0.04% sodium azide  |
| <b>Recommended Storage:</b> | Store at +4°C. Do not freeze. Product is photosensitive and should be protected from light.                                   |
| <b>Usage Summary:</b>       | ELISA: Detection.   |
| <b>Uses:</b>                | Flow Cytometry, ELISA (Optimal dilution to be determined by the researcher)   |
| <b>Size:</b>                | 120 tst   |

**Flow Cytometry Image:**

**Binding of anti-CD4(D2)/FITC to human HPB-MLT cells**



Flow cytometry of CD4 antibody

**Requested From:**

Japan

Laboratory Reagent For In Vitro Research Use Only

Not for resale without prior written consent from LifeSpan BioSciences, Inc.

Created on 9/25/2014

© 2014 LifeSpan BioSciences