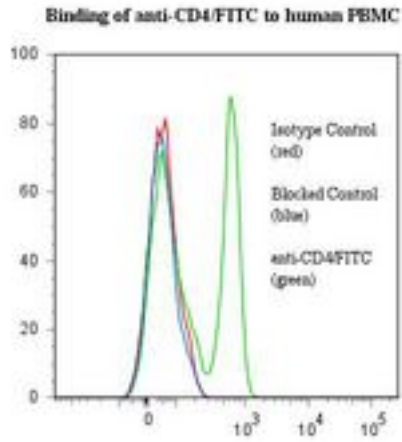


CD4 Mouse anti-Human Monoclonal (RPE) (QS4120) Antibody - LS-C134222 - LSBio	
CatalogID:	LS-C134222
Target:	CD4 molecule
Synonyms:	CD4 Antibody, CD4 antigen Antibody, CD4 receptor Antibody, CD4mut Antibody, CD4 antigen (p55) Antibody, CD4 molecule Antibody
Host	CD4 antibody was produced in Mouse
Clonality:	Monoclonal
Isotype:	IgG1
Clone Name:	QS4120
Conjugations:	R. Phycoerythrin (RPE)
Immunogen Species:	CD4 antibody was raised against Human
Immunogen:	CD4 antibody was raised against cD4+ transfectant/human CEM.
Specificity:	Domain 1 region of the CD4 molecule.
Reactivity:	Human
Purification:	Gel filtration
Presentation:	50 mM sodium phosphate, pH 7.5, 500 mM potassium chloride, 150 mM sodium chloride, 15% Glycerol, 0.2% BSA, 0.04% sodium azide
Recommended Storage:	Store at +4°C. Do not freeze. Product is photosensitive and should be protected from light.
Usage Summary:	ELISA: Capture.
Uses:	IHC, Flow Cytometry, ELISA (Optimal dilution to be determined by the researcher)
Size:	120 tst

Flow Cytometry Image:



Flow cytometry of CD4 antibody

Requested From:

Japan

Laboratory Reagent For In Vitro Research Use Only

Not for resale without prior written consent from LifeSpan BioSciences, Inc.

Created on 9/25/2014

© 2014 LifeSpan BioSciences