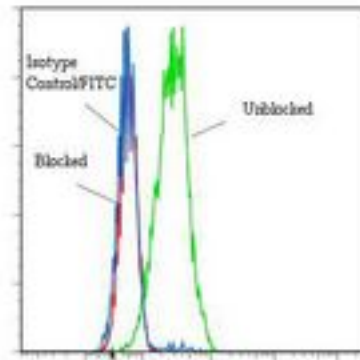


CD1C Mouse anti-Human Monoclonal (FITC) (M241) Antibody - LS-C134216 - LSBio

CatalogID:	LS-C134216
Target:	CD1c molecule
Synonyms:	CD1C Antibody, BDCA1 Antibody, CD1 Antibody, CD1c molecule Antibody, CD1C antigen, c polypeptide Antibody, CD1c antigen Antibody, R7 Antibody
Host	CD1C antibody was produced in Mouse
Clonality:	Monoclonal
Isotype:	IgG1,k
Clone Name:	M241
Conjugations:	Fluorescein (FITC)
Immunogen Species:	CD1C antibody was raised against Human
Antigen Type:	Cells
Immunogen:	CD1C antibody was raised against human T cell line Molt 4.
Specificity:	CD1c molecule of about 48 kd.
Reactivity:	Human
Purification:	Protein A purified
Presentation:	50 mM sodium phosphate, pH 7.5, 100 mM potassium chloride, 150 mM sodium chloride, 5% Glycerol, 0.2% BSA, 0.04% sodium azide
Recommended Storage:	Store at +4°C. DO NOT FREEZE.
Uses:	IHC - Frozen, Flow Cytometry (Optimal dilution to be determined by the researcher)
Size:	120 tst

Flow Cytometry Image:

**Binding of anti-CD1c/FITC to human
Molt-4 tumor cells**



Flow cytometry of CD1C antibody

Requested From:

Japan

Laboratory Reagent For In Vitro Research Use Only

Not for resale without prior written consent from LifeSpan BioSciences, Inc.

Created on 9/25/2014

© 2014 LifeSpan BioSciences