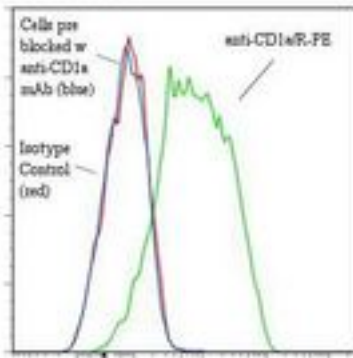


**CD1A Mouse anti-Human Monoclonal (RPE) (CB-T6) Antibody - LS-C134212 - LSBio**

<b>CatalogID:</b>	LS-C134212
<b>Target:</b>	CD1a molecule
<b>Synonyms:</b>	CD1A Antibody, CD1 Antibody, CD1A antigen, a polypeptide Antibody, CD1a molecule Antibody, FCB6 Antibody, HTA1 Antibody, HTa1 thymocyte antigen Antibody, R4 Antibody, T6 Antibody, CD1a antigen Antibody, Cluster of differentiation 1 A Antibody
<b>Host</b>	CD1A antibody was produced in Mouse
<b>Clonality:</b>	Monoclonal
<b>Isotype:</b>	IgG1,k
<b>Clone Name:</b>	CB-T6
<b>Conjugations:</b>	R. Phycoerythrin (RPE)
<b>Immunogen Species:</b>	CD1A antibody was raised against Human
<b>Immunogen:</b>	CD1A antibody was raised against human Jurkat tumor cells.
<b>Specificity:</b>	CD1a molecule of about 49 kd.
<b>Reactivity:</b>	Human
<b>Purification:</b>	Gel filtration
<b>Presentation:</b>	50 mM sodium phosphate, pH 7.5, 500 mM potassium chloride, 150 mM sodium chloride, 15% Glycerol, 0.2% BSA, 0.04% sodium azide
<b>Recommended Storage:</b>	Store at +4°C. Do not freeze. Product is photosensitive and should be protected from light.
<b>Uses:</b>	Flow Cytometry (Optimal dilution to be determined by the researcher)
<b>Size:</b>	120 tst

**Flow Cytometry Image:**

**Binding of anti-CD1a-R-PE to human HPB-MLT cells**



Flow cytometry of CD1A antibody

**Requested From:**

Japan

Laboratory Reagent For In Vitro Research Use Only

Not for resale without prior written consent from LifeSpan BioSciences, Inc.

Created on 9/25/2014

© 2014 LifeSpan BioSciences