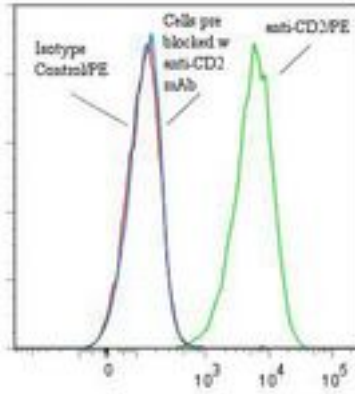


CD2 Mouse anti-Human Monoclonal (RPE) (UMCD2/1E7E8) Antibody - LS-C134200 - LSBio	
CatalogID:	LS-C134200
Target:	CD2 molecule
Synonyms:	CD2 Antibody, CD2 antigen Antibody, Erythrocyte receptor Antibody, LFA-3 receptor Antibody, LFA-2 Antibody, Lymphocyte-function antigen-2 Antibody, T11 Antibody, SRBC Antibody, CD2 molecule Antibody, Rosette receptor Antibody, T-cell surface antigen CD2 Antibody
Host	CD2 antibody was produced in Mouse
Clonality:	Monoclonal
Isotype:	IgG2a,k
Clone Name:	UMCD2/1E7E8
Conjugations:	R. Phycoerythrin (RPE)
Immunogen Species:	CD2 antibody was raised against Human
Antigen Type:	Cells
Immunogen:	CD2 antibody was raised against human rheumatoid synovial T cell line (ST-1).
Specificity:	T11-1 epitope of the 50 kd human CD2 molecule.
Reactivity:	Human
Purification:	Gel filtration
Presentation:	50 mM sodium phosphate, pH 7.5, 500 mM potassium chloride, 150 mM sodium chloride, 15% Glycerol, 0.2% BSA, 0.04% sodium azide
Recommended Storage:	Store at +4°C. Do not freeze. Product is photosensitive and should be protected from light.
Usage Summary:	Function: Useful for studying CD2 ligand-binding mechanisms involved with T cell development and activation.
Uses:	Western blot, Flow Cytometry, Functional Assay (Optimal dilution to be determined by the researcher)
Size:	120 tst

Flow Cytometry Image:

Binding of anti-CD2/PE to human HPB-MLT cells



Flow cytometry of CD2 antibody

Requested From:

Japan

Laboratory Reagent For In Vitro Research Use Only

Not for resale without prior written consent from LifeSpan BioSciences, Inc.

Created on 9/25/2014

© 2014 LifeSpan BioSciences