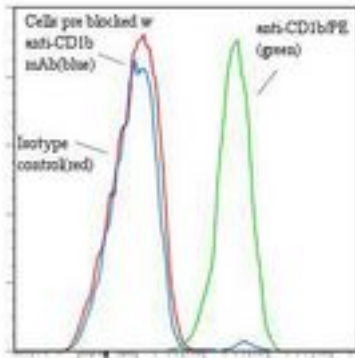


CD1B Mouse anti-Human Monoclonal (RPE) (SN13/K5-1B8) Antibody - LS-C134195 - LSBio

CatalogID:	LS-C134195
Target:	CD1b molecule
Synonyms:	CD1B Antibody, CD1 Antibody, CD1b molecule Antibody, CD1b antigen Antibody, CD1B antigen, b polypeptide Antibody
Host	CD1B antibody was produced in Mouse
Clonality:	Monoclonal
Isotype:	IgG1,k
Clone Name:	SN13/K5-1B8
Conjugations:	R. Phycoerythrin (RPE)
Immunogen Species:	CD1B antibody was raised against Human
Antigen Type:	Cells
Immunogen:	CD1B antibody was raised against membrane antigen preparation of human thymocytes.
Specificity:	CD1b molecule of about 45 kd. Specificity was confirmed using CD1b transfectants.
Reactivity:	Human
Purification:	Gel filtration
Presentation:	50 mM sodium phosphate, pH 7.5, 500 mM potassium chloride, 150 mM sodium chloride, 15% Glycerol, 0.2% BSA, 0.04% sodium azide
Recommended Storage:	Store at +4°C. Do not freeze. Product is photosensitive and should be protected from light.
Uses:	Flow Cytometry (Optimal dilution to be determined by the researcher)
Size:	120 tst

Flow Cytometry Image:

Binding of anti-CD1b/PE to human HPB-MLT cells



Flow cytometry of CD1B antibody

Requested From:

Japan

Laboratory Reagent For In Vitro Research Use Only

Not for resale without prior written consent from LifeSpan BioSciences, Inc.

Created on 9/25/2014

© 2014 LifeSpan BioSciences