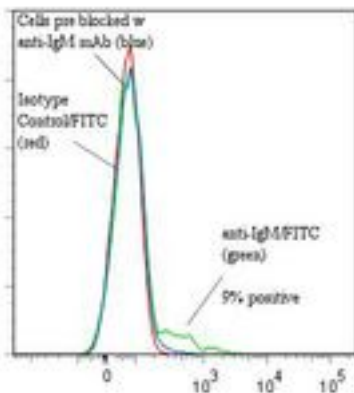


Human IgM Mouse anti-Human Monoclonal (FITC) (UCHB1) Antibody - LS-C134189 - LSBio

<b>CatalogID:</b>	LS-C134189
<b>Target:</b>	Human IgM
<b>Host</b>	Human IgM antibody was produced in Mouse
<b>Clonality:</b>	Monoclonal
<b>Isotype:</b>	IgG1
<b>Clone Name:</b>	UCHB1
<b>Conjugations:</b>	Fluorescein (FITC)
<b>Immunogen Species:</b>	Human IgM antibody was raised against Human
<b>Immunogen:</b>	Human IgM antibody was raised against prolymphocytic leukemic B cells.
<b>Specificity:</b>	Surface expressed IgM.
<b>Reactivity:</b>	Human
<b>Purification:</b>	Protein A purified
<b>Presentation:</b>	50 mM sodium phosphate, pH 7.5, 100 mM potassium chloride, 150 mM sodium chloride, 5% Glycerol, 0.2% BSA, 0.04% sodium azide
<b>Recommended Storage:</b>	Store at +4°C. Do not freeze. Product is photosensitive and should be protected from light.
<b>Usage Summary:</b>	Function: Can deliver a costimulatory signal to B cells In Vitro.
<b>Uses:</b>	Flow Cytometry, ELISA, Functional Assay (Optimal dilution to be determined by the researcher)
<b>Size:</b>	120 tst

**Flow Cytometry Image:**

Binding of anti-IgM/FITC to human PBMC



Flow cytometry of Human IgM antibody

<b>Requested From:</b>	Japan
Laboratory Reagent For In Vitro Research Use Only	
Not for resale without prior written consent from LifeSpan BioSciences, Inc.	
Created on 9/25/2014	
© 2014 LifeSpan BioSciences	