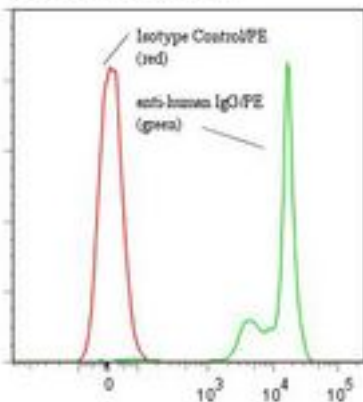


Human IgG Mouse anti-Human Monoclonal (RPE) (ICO-97) Antibody - LS-C134185 - LSBio

CatalogID:	LS-C134185
Target:	Human IgG
Host	Human IgG antibody was produced in Mouse
Clonality:	Monoclonal
Isotype:	IgG1
Clone Name:	ICO-97
Conjugations:	R. Phycoerythrin (RPE)
Immunogen Species:	Human IgG antibody was raised against Human
Antigen Type:	Purified protein
Immunogen:	Human IgG antibody was raised against human Ig.
Specificity:	Cell surface human IgG on B cells as well as Recombinant human IgG1 Fc + hinge constructs in EIA.
Reactivity:	Human
Purification:	Protein A purified
Presentation:	50 mM sodium phosphate, pH 7.5, 500 mM potassium chloride, 150 mM sodium chloride, 15% Glycerol, 0.2% BSA, 0.04% sodium azide
Recommended Storage:	Store at +4°C. Do not freeze. Product is photosensitive and should be protected from light.
Uses:	Flow Cytometry, ELISA (Optimal dilution to be determined by the researcher)
Size:	120 tst

Flow Cytometry Image:

Binding of anti-human IgG/PE to human IgG-coated microparticles



Flow cytometry of Human IgG antibody

Requested From:	Japan
Laboratory Reagent For In Vitro Research Use Only	
Not for resale without prior written consent from LifeSpan BioSciences, Inc.	
Created on 9/25/2014	
© 2014 LifeSpan BioSciences	