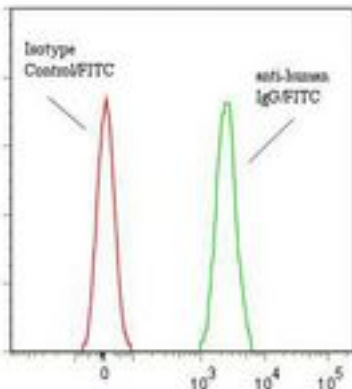


Human IgG Mouse anti-Human Monoclonal (FITC) (ICO-97) Antibody - LS-C134184 - LSBio

<b>CatalogID:</b>	LS-C134184
<b>Target:</b>	Human IgG
<b>Host</b>	Human IgG antibody was produced in Mouse
<b>Clonality:</b>	Monoclonal
<b>Isotype:</b>	IgG1
<b>Clone Name:</b>	ICO-97
<b>Conjugations:</b>	Fluorescein (FITC)
<b>Immunogen Species:</b>	Human IgG antibody was raised against Human
<b>Antigen Type:</b>	Purified protein
<b>Immunogen:</b>	Human IgG antibody was raised against human Ig.
<b>Specificity:</b>	Cell surface human IgG on B cells as well as Recombinant human IgG1 Fc + hinge constructs in EIA.
<b>Reactivity:</b>	Human
<b>Purification:</b>	Protein A purified
<b>Presentation:</b>	50 mM sodium phosphate, pH 7.5, 100 mM potassium chloride, 150 mM sodium chloride, 5% Glycerol, 0.2% BSA, 0.04% sodium azide
<b>Recommended Storage:</b>	Store at +4°C. Do not freeze. Product is photosensitive and should be protected from light.
<b>Uses:</b>	Flow Cytometry, ELISA (Optimal dilution to be determined by the researcher)
<b>Size:</b>	120 tst

**Flow Cytometry Image:**

Binding of anti-human IgG/FITC to huIgG: coated CML beads



Flow cytometry of Human IgG antibody

<b>Requested From:</b>	Japan
Laboratory Reagent For In Vitro Research Use Only	
Not for resale without prior written consent from LifeSpan BioSciences, Inc.	
Created on 9/25/2014	
© 2014 LifeSpan BioSciences	