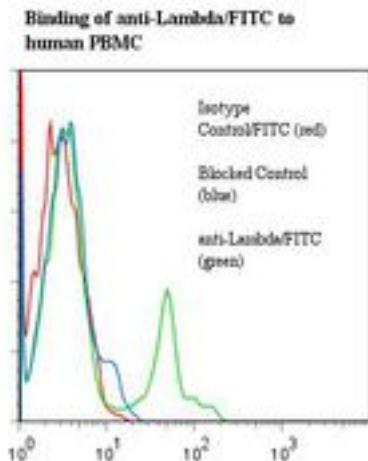


Human Ig Lambda Light Chain Mouse anti-Human Monoclonal (FITC) (ICO106) Antibody - LS-C134179 - LSBio

CatalogID:	LS-C134179
Target:	Human Ig Lambda Light Chain
Host	Mouse
Clonality:	Monoclonal
Isotype:	IgG1
Clone Name:	ICO106
Conjugations:	Fluorescein (FITC)
Immunogen Species:	Human
Antigen Type:	Purified protein
Immunogen:	Human Ig.
Specificity:	Cell surface lambda chain on B cells.
Reactivity:	Human
Purification:	Protein A purified
Presentation:	50 mM sodium phosphate, pH 7.5, 100 mM potassium chloride, 150 mM sodium chloride, 5% Glycerol, 0.2% BSA, 0.04% sodium azide
Recommended Storage:	Store at +4°C. Do not freeze. Product is photosensitive and should be protected from light.
Uses:	Flow Cytometry, ELISA (Optimal dilution to be determined by the researcher)
Size:	120 tst

Flow Cytometry Image:



Flow cytometry of Ig Lambda Light Chain antibody

Requested From:	Japan
Laboratory Reagent For In Vitro Research Use Only	
Not for resale without prior written consent from LifeSpan BioSciences, Inc.	
Created on 9/25/2014	
© 2014 LifeSpan BioSciences	