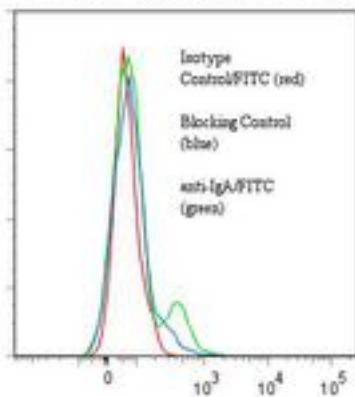


Human IgA Mouse anti-Human Monoclonal (FITC) (Hisa43) Antibody - LS-C134174 - LSBio

CatalogID:	LS-C134174
Target:	Human IgA
Host	Human IgA antibody was produced in Mouse
Clonality:	Monoclonal
Isotype:	IgG1,k
Clone Name:	Hisa43
Conjugations:	Fluorescein (FITC)
Immunogen Species:	Human IgA antibody was raised against Human
Immunogen:	Human IgA antibody was raised against human salivary proteins.
Specificity:	Cell surface expressed IgA.
Reactivity:	Human
Purification:	Protein A purified
Presentation:	50 mM sodium phosphate, pH 7.5, 100 mM potassium chloride, 150 mM sodium chloride, 5% Glycerol, 0.2% BSA, 0.04% sodium azide
Recommended Storage:	Store at +4°C. Do not freeze. Product is photosensitive and should be protected from light.
Uses:	Flow Cytometry, ELISA (Optimal dilution to be determined by the researcher)
Size:	120 tst

Flow Cytometry Image:

Binding of anti-IgA/FITC to human PBMC



Flow cytometry of Human IgA antibody

Requested From:	Japan
------------------------	-------

Laboratory Reagent For In Vitro Research Use Only

Not for resale without prior written consent from LifeSpan BioSciences, Inc.

Created on 9/25/2014

© 2014 LifeSpan BioSciences