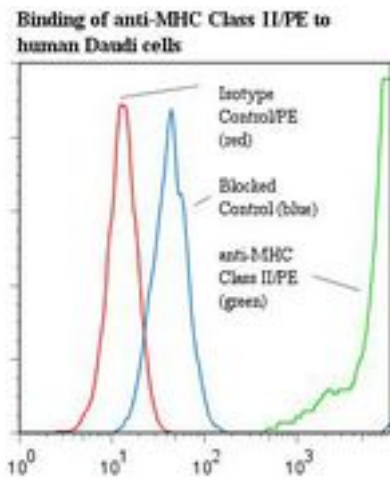


MHC Class II Mouse anti-Human Monoclonal (RPE) (TDR31.1) Antibody - LS-C134164 - LSBio	
CatalogID:	LS-C134164
Target:	MHC Class II
Host	MHC Class II antibody was produced in Mouse
Clonality:	Monoclonal
Isotype:	IgG1
Clone Name:	TDR31.1
Conjugations:	R. Phycoerythrin (RPE)
Immunogen Species:	MHC Class II antibody was raised against Human
Antigen Type:	Cells
Immunogen:	MHC Class II antibody was raised against purified (With Antibiotics) class II from JY cell line.
Specificity:	Monomorphic class II beta chain epitope.
Reactivity:	Human
Purification:	Gel filtration
Presentation:	50 mM sodium phosphate, pH 7.5, 500 mM potassium chloride, 150 mM sodium chloride, 15% Glycerol, 0.2% BSA, 0.04% sodium azide
Recommended Storage:	Store at +4°C. Do not freeze. Product is photosensitive and should be protected from light.
Uses:	IHC - Frozen, Western blot, Flow Cytometry (Optimal dilution to be determined by the researcher)
Size:	120 tst

Flow Cytometry Image:



Flow cytometry of MHC Class II antibody

Requested From:

Japan

Laboratory Reagent For In Vitro Research Use Only

Not for resale without prior written consent from LifeSpan BioSciences, Inc.

Created on 9/25/2014

© 2014 LifeSpan BioSciences